

DELHI TRANSCO LTD.

STATE LOAD DISPATCH CENTER

PROGRESS REPORT

JUN - 2018

S. No.	CONTENTS	Page No.
1.	Salient Features of Delhi Power System	3
2.	Performance of Generating Stations within Delhi	4
3.	Details of Outage of Generating Stations within Delhi	5-11
4.	Allocation of Power to Delhi from unallocated quota of central sector	12
5.	Allocation of Power to Discoms	13
6.	Power Availability Demand Position of Delhi at the time of occurrence of Peak Demand	14
7.	Power Availability Demand Position of Delhi at the time of occurrence of Maximum Un-Restricted Demand	15
8.	Source wise scheduled drawl from grid and Availability within Delhi	16-19
9.	Shedding Details	20-24
10.	Load Curve for the Day of Peak Demand	25
11.	Load Curve for the day of occurrence of Maximum Un-Restricted Demand	26
12.	Load Curve for the day of Maximum Energy Consumed	27
13.	Load Curve for the day of Maximum Un-Restricted Energy Demand	28
14.	Load Duration Curve	29
15.	Frequency Analysis	30
16.	Voltage Profile for significant 220kV Sub-Stations	31
17.	Voltage Profile for significant 400kV Sub-Stations	32-33
18.	Details of Capacitors Installations in Delhi	34-42
19.	Tripping Details of 400/220 KV System in Delhi Power System	43-44
20.	Details of Under frequency Relay operations in Delhi Power System	45

1 **SALIENT FEATURES OF DELHI POWER SYSTEM**

Sr. No.	Features	JUN 2017	JUN 2018
1	Effective Generation Capacity within Delhi in MW		
	Rajghat Power House	135	135
	Gas Turbine	270	270
	Pragati Power Corporation Ltd.	330	330
	Badapur Thermal Power Station	705	705
	Rithala GT	108	108
	Bawana	1372	1372
	TOWMCL	16	16
	Total	2936	2936
2	Maximum Unrestricted Demand (MW)	6553	6937
	Date	06.06.17	08.06.18
	Time	15.31.37	15.28.33
3	Peak Demand met (MW)	6526	6934
	Date	06.06.17	08.06.18
	Time	15.31.37	15.28.33
4	Peak Availability (MW)	6526	6939
5	Shortage (-) / Surplus (+) in MW	(+)75	(+)5
6	Percentage Shortage (-) / Surplus (+)	(+) 1.15	(+) 0.07
7	Maximum Energy Consume in a day (Mus)	136.816	139.383
8	Energy Consumed during the month	3355.182	3820.913
9	Load Shedding in Mus		
A)	Due to Grid Restrictions		
i)	Under Frequency Relay Operations	0.000	0.000
ii)	Manual Load shedding from DTL S/Stns.	0.000	0.000
iii)	Load Shedding due to low frequency / Low Voltage / TTC/ATC Violation		
	NDPL	0.000	0.008
	BRPL	0.052	0.000
	BYPL	0.022	0.000
	NDMC	0.000	0.000
	MES	0.000	0.000
iv)	Due to transmission Constraints in Central Sector	0.000	0.000
	Total due to Grid Restriction	0.074	0.008
B)	Due to Constraints in System in Mus		
	DTL	0.259	0.196
	NDPL	0.123	0.298
	BRPL	2.222	1.926
	BYPL	0.320	0.222
	NDMC	0.000	0.008
	MES	0.000	0.000
	Other Agencies	0.002	0.037
	Total	2.926	2.687
11	Grand Total in Mus	3.000	2.695

2. PERFORMANCE OF GENERATING STATIONS WITHIN DELHI DURING JUN 2018

A) For the month of Jun 2018

All Figures in MUs

S. No	Stations	Gross Generation	Aux. Consumption	Net Generation	Availability (%)	Backing Down
1.	RPH	0.000	0.237	-0.237	0.00	0.00
2.	GT	88.957	2.734	86.223	82.43	69.255
3.	PPCL	196.547	4.772	191.825	92.44	21.691
4.	BTPS	242.059	21.458	220.601	60.20	49.545
5.	Rithala	0.000	0.060	-0.060	--	--
6.	Bawana	350.778	12.614	338.164	64.38	299.779
7.	Towmcl	12.838	2.027	110.811	--	--
8.	EDWPCL	2.915	0.990	1.925	--	--
9.	DMSWL	12.338	2.268	10.070	--	--
	TOTAL	906.432	47.16	959.322	--	--

B) For the Year 2018-19 (Upto Jun 2018)

Power Station	Effective Capacity (MW)	Net Generation in MUs for Jun 2018	Availability (%) for Jun 2018	PLF (%) for Jun 2018	Cumulative Generation in MUs upto Jun 2018 for the year 2018-19	Cumulative Availability in % upto Jun 2018 for the year 2018-19	Cumulative PLF in % upto Jun 2018 for the year 2018-19
RPH	135	-0.237	0.00	0.00	-0.676	0.00	0.00
GT	270	86.223	82.43	45.71	202.203	72.17	35.52
PPCL	330	191.825	92.44	83.02	512.338	84.44	73.08
BTPS	705	220.601	60.20	48.87	508.885	60.61	36.36
Rithala	108	-0.060	--	--	-0.182	--	--
Bawana	1372	338.164	64.38	35.31	961.842	59.58	33.36
Towmcl	16	110.811	--	--	35.556	--	--
EDWPCL	--	1.925	--	--	6.205	--	--
DMSWL	--	10.070	--	--	32.268	--	--
TOTAL	2936	959.322	--	--	2258.439	--	--

3 DETAILS OF OUTAGES OF GENERATING STNS. WITHIN DELHI W.E.F. APRIL 2018

RPH

Unit No	Capacity in MW	Outage		Synchronization		Reason of Outage
		Date	Time	Date	Time	
1	67.5	08.05.15	13:40	Contd.		Not in operation due to not meeting pollution norms.

Unit No	Capacity in MW	Outage		Synchronization		Reason of Outage
		Date	Time	Date	Time	
2	67.5	21.05.15	10:20	Contd.		Not in operation due to not meeting pollution norms.

(B) Gas Turbine

Unit No	Capacity in MW	Outage		Synchronization		Reason of Outage
		Date	Time	Date	Time	
1	30	1.4.18	00:00	4.4.18	06:44	Machine stopped as per SLDC message due to low demand on CCNG
		17.4.18	00:45	17.4.18	13:25	Machine tripped on Heavy jerk from the system and came on FSNL
		8.5.18	12:33	19.5.18	19:27	Machine stopped due to changeover to GT#5.and not started due to no demand from SLDC.
		23.5.18	08:24	23.5.18	15:02	Machine tripped on CRT got blank.
		26.5.18	12:23	27.5.18	19:25	Machine tripped on heavy jerk and there was a CW line leakage.The PTW cancelled on 27.05.2018 at 19:25.
		27.5.18	19:25	29.5.18	19:47	Machine could not be taken on bar due to no schedule from SLDC on CCNG
		2.6.18	09:20	4.6.18	19:37	Machine stopped as per SLDC as no schedule on CCNG
		30.6.18	08:14	30.6.18	08:35	Machine came on FSNL due to tripping of 160 MVA Transformer due to grid disturbance.

Unit No	Capacity in MW	Outage		Synchronization		Reason of Outage
		Date	Time	Date	Time	
2	30	17.4.18	00:45	17.4.18	03:40	Machine tripped on Heavy jerk from the system and came on FSNL
		18.4.18	05:40	18.4.18	07:49	Machine tripped on Exhaust Temperature High
		13.5.18	19:45	13.5.18	20:20	Machine came on FSNL due to jerk in system.
		16.5.18	03:18	16.5.18	04:00	Machine tripped on lub oil temp high.
		26.5.18	08:05	27.5.18	19:25	Machine tripped on TAD High. Later machine cleared and continued on no load to attend leakage in CW line .PTW cancelled on 27.05.2018 at 19:25 hrs.
		27.5.18	19:25	29.5.18	21:17	Machine could not be taken on bar due to no schedule from SLDC on CCNG
		2.6.18	09:15	4.6.18	11:35	Machine stopped as per SLDC as no schedule on CCNG
		26.6.18	23:23	27.6.18	00:10	Machine tripped on T communication link inoperative.
		27.6.18	12:46	27.6.18	18:00	Machine stopped to replace faulty transformer by C&I div.
		30.6.18	07:40	30.6.18	12:46	Machine stopped as per SLDC as no schedule on CCNG

Unit No	Capacity in MW	Outage		Synchronization		Reason of Outage
		Date	Time	Date	Time	
3	30	1.4.18	00:00	4.4.18	07:20	Machine stopped as per SLDC message due to low demand on CCSpot
		9.4.18	13:45	13.4.18	13:32	Machine stopped as per SLDC message due to low demand on CCSpot. Started for Testing Black Start
		13.4.18	14:40	15.4.18	17:05	Machine stopped as per SLDC message due to low demand on CCSpot. Started for Trial RUN
		15.4.18	17:10	16.4.18	02:18	Machine stopped as per SLDC message due to low demand on CCSpot
		24.4.18	11:00	27.4.18	18:50	Machine stopped as per SLDC message due to low demand on CCSpot
		29.4.18	00:03	12.05.18	00:20	Machine stopped as per SLDC message due to low demand on CCSpot
		13.5.18	19:45	13.5.18	21:04	Machine came on FSNL due to jerk in system.
		14.5.18	00:00	21.5.18	21:50	Machine could not be taken on bar due to no schedule from SLDC on CCNG
		23.5.18	16:08	24.5.18	00:17	Machine could not be taken on bar due to no schedule from SLDC on CCNG
		26.5.18	16:35	27.5.18	19:25	Machine stopped to attend CW line leakage.The PTW cancelled on 27.05.2018 at 19:25.
		27.5.18	19:25	29.5.18	12:55	Machine could not be taken on bar due to no schedule from SLDC on CCNG
		29.5.18	20:22	04.06.18	11:54	Machine could not be taken on bar due to no schedule from SLDC on CCNG
		4.6.18	13:06	4.6.18	15:00	Machine tripped on Exhaust temp high and machine cleared at 15:00 hrs..
		4.6.18	15:00	20.6.18	12:45	Machine not started after clearance due to low schedule from SLDC.
		28.6.18	00:01	28.6.18	13:06	Machine stopped as per the message of SLDC
		30.6.18	08:14	30.6.18	08:30	Machine came on FSNL due to tripping of 160 MVA Transformer due to grid disturbance.
		30.6.18	10:02	30.6.18	10:40	Machine tripped on Battery undervoltage
30.6.18	13:30	30.6.18	23:59	Machine stopped as per the message of SLDC		

Unit No	Capacity in MW	Outage		Synchronization		Reason of Outage
		Date	Time	Date	Time	
4	30	1.4.18	00:00	4.4.18	10:05	Machine stopped as per SLDC message due to low demand on CCSpot
		6.4.18	07:40	6.4.18	16:31	Machine tripped on Electrical trouble normal shutdown
		6.4.18	17:15	15.4.18	07:34	Machine stopped as per SLDC message due to low demand on CCSpot
		15.4.18	23:29	19.4.18	13:04	Machine tripped on Communication failed with IO Pack. The machine not started due to low schedule from SLDC
		20.4.18	08:58	30.4.18	23:59	Machine stopped as per SLDC message due to low demand on CCSpot
		1.5.18	00:00	12.5.18	21:06	Machine could not be taken on bar due to no schedule from SLDC on CCNG
		13.5.18	18:00	23.5.18	09:13	Machine could not be taken on bar due to no schedule from SLDC on CCNG
		23.5.18	11:50	24.5.18	12:47	Machine stopped as load could not be increased above 20 MW.
		24.5.18	12:47	26.5.18	08:44	Machine could not be taken on bar due to no schedule from SLDC on CCNG
		26.5.18	12:23	26.5.18	14:25	Machine tripped due to jerk in system and later taken to attend leakage in CW line..
		26.5.18	16:32	27.5.18	19:25	Machine stopped to attend CW line leakage.The PTW cancelled on 27.05.2018 at 19:25.
		27.5.18	19:25	28.5.18	12:18	Machine started after attend of CW line leakage
		28.5.18	14:51	29.5.18	12:21	Machine stopped as no schedule from SLDC .
		29.5.18	19:52	4.6.18	14:50	Machine stopped as no schedule from SLDC .
		4.6.18	20:10	20.6.18	22:06	Machine stopped as per SLDC as no schedule on CCNG
		28.6.18	00:03	28.6.18	13:01	Machine stopped as per the message of SLDC
		30.6.18	08:14	30.6.18	08:46	Machine came on FSNL due to tripping of 160 MVA Transformer due to grid disturbance.
30.6.18	16:15	30.6.18	23:59	Machine stopped as per SLDC as no schedule on CCNG		

Unit No	Capacity in MW	Outage		Synchronization		Reason of Outage
		Date	Time	Date	Time	
5	30	1.4.18	00:00	29.4.18	10:01	Machine stopped as per SLDC message due to low demand on CCSpot
		29.4.18	13:45	29.4.18	18:10	Trial run
		29.4.18	22:14	9.5.18	12:19	Machine stopped as per SLDC message due to low demand on CCSpot
		12.5.18	17:25	13.5.18	13:03	Machine tripped on overspeed bolt trip alarm appeared.
		13.5.18	18:00	23.5.18	10:40	Machine could not be taken on bar due to low schedule from SLDC on CCNG
		23.5.18	23:08	25.5.18	16:03	Machine tripped on Exhaust overtemperature. Machine cleared on 25.05.2018 at 16:03 hrs.
		26.5.18	12:23	26.5.18	16:35	Machine tripped on heavy jerk and there was a CW line leakage.The PTW cancelled on 27.05.2018 at 19:25.
		26.5.18	16:35	27.5.18	19:25	Machine stopped to attend CW line leakage.The PTW cancelled on 27.05.2018 at 19:25.
		27.5.18	19:25	28.5.18	13:33	Machine started after CW line leakage attended.
		2.6.18	12:25	2.6.18	20:30	Machine stopped to attend hotspot in HV bushing of STG-III Transformer.Machine made available at 20:30 hrs.
		2.6.18	20:30	4.6.18	09:16	Machine stopped as per SLDC as no schedule on CCNG
		10.6.18	08:02	11.6.18	10:50	Machine stopped as per SLDC as no schedule on CCNG
17.6.18	11:00	30.6.18	23:59	Machine stopped as per SLDC as no schedule on CCNG		

Unit No	Capacity in MW	Outage		Synchronization		Reason of Outage
		Date	Time	Date	Time	
6	30	1.4.18	00:00	23.05.18	18:13	Machine under Major Inspection and out of DC
		23.5.18	18:30	24.5.18	15:14	Machine tripped on Generator journal bearing drain oil temp High and lub oil header temp alos high.
		26.5.18	16:35	27.5.18	19:25	Machine stopped to attend CW line leakage.The PTW cancelled on 27.05.2018 at 19:25.
		27.5.18	19:25	28.5.18	11:21	Machine started after CW line leakage attended.
		30.5.18	11:20	30.5.18	12:42	Machine tripped on Exhaust temperature high.
		2.6.18	12:30	2.6.18	18:10	Machine stopped to attend hotspot in HV bushing of STG-III Transformer.
		10.6.18	08:03	10.6.18	20:05	Machine stopped to attend problem in Governing system of STG. The machine made available at 20.05 hrs. and not taken on load due to low schedule from SLDC.
		10.6.18	20:05	11.6.18	10:58	Machine not started as per SLDC as no schedule on CCNG
		17.6.18	11:00	20.6.18	13:46	Machine stopped as per SLDC as no schedule on CCNG
		20.6.18	19:00	30.6.18	23:59	Machine stopped as per SLDC as no schedule on CCNG

Unit No	Capacity in MW	Outage		Synchronization		Reason of Outage
		Date	Time	Date	Time	
STG -1	30	17.4.18	00:45	17.4.18	15:14	Machine tripped on Heavy jerk from the system
		26.4.18	16:52	26.4.18	18:44	Machine tripped due to tripping of 2 MVA Transformer-1
		1.5.18	00:28	1.5.18	02:16	Machine tripped due to tripping of 2 MVA Transformer.
		8.5.18	12:34	8.5.18	13:25	Tripped while slashing HRSG-1
		8.5.18	14:56	8.5.18	15:54	Tripped on class -A relay operated.
		13.5.18	19:45	13.5.18	21:41	Machine tripped due to jerk in system.
		16.5.18	03:02	16.5.18	04:52	Machine tripped due to jerk in system
		16.5.18	12:34	16.5.18	13:21	Machine tripped on Turbine speed very high I,e malfunctioning of output card of turbine.
		26.5.18	16:35	27.5.18	19:25	Machine stopped to attend CW line leakage.The PTW cancelled on 27.05.2018 at 19:25.
		27.5.18	19:25	30.5.18	01:16	Machine could not be taken on bar due to no schedule from SLDC
		2.6.18	09:23	4.6.18	13:44	Machine stopped as per SLDC as no schedule
		26.6.18	23:30	27.6.18	00:40	Machine tripped on Exhaust temp high
30.6.18	07:34	30.6.18	18:40	Machine tripped on Heavy jerk in the system and delay in synchronizing due to vibration problem in front and rear bearing AND EJECTOR FLANGE DAMAGED IN JERK..		

Unit No	Capacity in MW	Outage		Synchronization		Reason of Outage
		Date	Time	Date	Time	
STG -2	30	1.4.18	00:00	4.4.18	14:08	Machine stopped as per SLDC message due to low demand on CCSpot
		7.4.18	11:35	7.4.18	12:08	Machine tripped suddenly on control valve closing
		9.4.18	13:45	15.4.18	09:43	Machine stopped as per SLDC message due to low demand on CCSpot
		17.4.18	01:20	17.4.18	04:58	Machine tripped on all the parameters showing on blue band .
		18.4.18	08:01	18.4.18	08:35	Machine tripped on Turbine channel 1&2 operated alarm appeared.
		18.4.18	10:48	18.4.18	11:38	Machine tripped on hunting started of parameters on BCD.
		24.4.18	11:00	24.4.18	12:15	Machine stopped to attend oil leakage from servo motor line
		24.4.18	12:15	27.4.18	21:00	Machine cleared but not started due to no schedule from SLDC
		29.4.18	00:03	30.4.18	23:59	Machine stopped as per SLDC message due to low demand on CCSpot
		17.4.18	01:20	17.4.18	03:58	Machine tripped on all the parameters showing on blue band .
		1.5.18	00:00	12.5.18	03:58	Machine could not be taken on bar due to no schedule from SLDC
		13.5.18	19:45	13.5.18	20:30	Machine tripped on jerk in system.But later was not started due to low schedule from SLDC
		13.5.18	20:30	21.5.18	23:49	Machine could not be taken on bar due to no schedule from SLDC
		26.5.18	16:35	27.5.18	19:25	Machine stopped to attend CW line leakage.The PTW cancelled on 27.05.2018 at 19:25.
		27.5.18	19:25	29.5.18	14:33	Machine could not be taken on bar due to no schedule from SLDC
		29.5.18	18:40	04.06.18	16:08	Machine stopped to attend water leakage from inlet line of Generator cooler.
		4.6.18	20:13	20.6.18	15:30	Machine stopped as per SLDC as no schedule
		28.6.18	00:03	28.6.18	15:40	Machine stopped as per the message of SLDC
30.6.18	08:14	30.6.18	13:30	Machine tripped due to tripping of 160 MVA transformer as there was disturbance in the grid.		
30.6.18	13:30	30.6.18	23:59	Machine could not be taken on bar due to Axial shift and taken out of DC.		

Unit No	Capacity in MW	Outage		Synchronization		Reason of Outage
		Date	Time	Date	Time	
STG -3	30	1.4.18	00:00	08.05.18	14.18	Machine under O/H
		8.5.18	14:28	8.5.18	15:52	Tripped on class -A relay operated.
		11.5.18	15:54	12.5.18	13:50	Machine tripped on calibration of woodward governor.Is under maintenance and STG-II taken on 12.05.2018 at 13:50 made available.
		12.5.18	13:50	23.5.18	13:30	Machine could not be taken on bar due to no schedule from SLDC
		23.5.18	23:08	24.5.18	19:23	Machine tripped on tripping of GT-5 & 6
		26.5.18	16:35	27.5.18	19:25	Machine stopped to attend CW line leakage.The PTW cancelled on 27.05.2018 at 19:25.
		27.5.18	19:25	28.5.18	14:18	Machine started after attend CW line leakage.
		28.5.18	17:46	28.5.18	18:13	Machine tripped on low vacuum.
		1.6.18	08:15	1.6.18	11:06	Machine stopped to attend oil leakage in governor system.
		2.6.18	12:32	2.6.18	19:48	Machine stopped to attend hotspot in HV bushing of STG-III Transformer.
		9.6.18	11:30	9.6.18	12:50	Machine stopped to attend problem in Governing system of STG.
		10.6.18	03:52	10.6.18	04:24	Machine stopped to attend problem in Governing system of STG.
		10.6.18	08:03	10.6.18	20:05	Machine again stopped to attend problem in Governing system of STG. The machine made available on 10.06.2018 at 20:05 hrs but not taken on load due to low schedule from SLDC
		10.6.18	20:05	11.6.18	13:00	Machine not started due to low schedule from SLDC
		16.6.18	12:25	16.6.18	16:15	Machine tripped on FJB vibration very high.
		17.6.18	11:00	20.6.18	17:45	Machine stopped as per SLDC as no schedule
		20.6.18	17:45	24.6.18	16:45	Machine was out of DC due to problem in MOP and taken in DC on 24.06.2018 at 16:45 hrs. The machine not taken on load due to low schedule from SLDC.
		24.6.18	16:45	30.6.18	12:17	Machine after being taken in DC not taken on load due to no schedule from SLDC
30.6.18	12:17	30.6.18	20:00	Machine not available due to problem in MOP.		
30.6.18	20:00	30.6.18	23:59	Machine not taken on bar due to low schedule from SLDC.		

(C) PRAGATI

Unit No	Capacity in MW	Outage		Synchronization		Reason of Outage
		Date	Time	Date	Time	
1	104	01.04.18	00.00	17.04.18	16.49	Stopped for HGPI
		03.05.18	12.46	04.05.18	15.07	Stopped due to low demand.
		04.05.18	16.10	11.05.18	14.16	Stopped due to low demand.
		13.05.18	19.50	13.05.18	20.14	Tripped due to grid disturbance
		16.05.18	03.01	16.05.18	04.49	
		26.05.18	12.24	26.05.18	13.22	
		26.05.18	13.56	26.05.18	14.42	
		30.06.18	08.17	30.06.18	12.57	

Unit No	Capacity in MW	Outage		Synchronization		Reason of Outage
		Date	Time	Date	Time	
2	104	17.04.18	18.47	18.04.18	12.45	Tripped on internal fault.
		18.04.18	12.45	19.04.18	06.24	Stopped due to low demand.
		03.05.18	07.19	03.05.18	09.07	Tripped due to grid disturbance
		26.05.18	13.56	26.05.18	14.38	
		30.06.18	08.17	30.06.18	09.35	

Unit No	Capacity in MW	Outage		Synchronization		Reason of Outage
		Date	Time	Date	Time	
STG	122	20.04.18	15.01	20.04.18	16.43	Tripped on internal fault.
		03.05.18	07.19	03.05.18	09.00	Tripped due to grid disturbance
		03.05.18	09.00	03.05.18	10.48	Internal problem
		03.05.18	16.51	03.05.18	17.50	Tripped on internal fault.
		26.05.18	13.56	26.05.18	15.39	Tripped due to grid disturbance
		26.05.18	17.59	26.05.18	19.41	
		03.06.18	07.23	03.06.18	12.16	
		30.06.18	08.17	30.06.18	11.50	

(D) BADARPUR THERMAL POWER STATION

Unit	Capacity in MW	Outage		Synchronization		Reason of Outage
		Date	Time	Date	Time	
1	95	01.04.18	00.00	30.06.18	00.00	Not in operation due to not meeting pollution norms

Unit	Capacity in MW	Outage		Synchronization		Reason of Outage
		Date	Time	Date	Time	
2	95	01.04.18	00.00	30.06.18	00.00	Not in operation due to not meeting pollution norms

Unit	Capacity in MW	Outage		Synchronization		Reason of Outage
		Date	Time	Date	Time	
3	95	01.04.18	00.00	30.06.18	00.00	Not in operation due to not meeting pollution norms

Unit	Capacity in MW	Outage		Synchronization		Reason of Outage
		Date	Time	Date	Time	
4	210	01.04.18	00.00	01.05.18	11.33	Not in operation due to not meeting pollution norms
		03.05.18	13.29	13.05.18	00.42	

Unit	Capacity in MW	Outage		Synchronization		Reason of Outage
		Date	Time	Date	Time	
5	210	01.04.18	00.00	09.04.18	07.54	Not in operation due to not meeting pollution norms

(E) BAWANA CCGT POWER STATION

Unit	Capacity in MW	Outage		Synchronization		Reason of Outage
		Date	Time	Date	Time	
1	216	21.04.18	0.00	23.04.18	07.00	Machine shut down for Filter Replacement so half of STG #1 was also not available.
		16.06.18	08.02	16.06.18	23.59	Unit taken out of DC for solenoid change
		28.06.18	00.50	30.06.18	23.59	DP was running very high so unit taken out of DC for filter replacement.

Unit	Capacity in MW	Outage		Synchronization		Reason of Outage
		Date	Time	Date	Time	
2	216	16.06.18	08.02	16.06.18	23.59	Unit taken out of DC for solenoid change
		28.06.18	00.50	30.06.18	23.59	DP was running very high so unit taken out of DC for filter replacement.

Unit	Capacity in MW	Outage		Synchronization		Reason of Outage
		Date	Time	Date	Time	
STG-1	254	02.04.18	06.49	02.04.18	11.58	Field breaker and Excitation Trip generated due to Regulation Supply fuse failure. Circuit checked, Power fuse changed and machine synchronised to further test the system.
		02.04.18	12.12	02.04.18	13.34	Again machine tripped on same fault. Fuse Barrier circuit replaced due to malfunctioning of micro switch contact.
		02.04.18	19.37	02.04.18	21.09	Field breaker and Excitation Trip generated due to Regulation Supply fuse failure. The circuit of PLC and fuse barrier checked and digital I/O card which generates this signal changed, machine synchronised.
		02.04.18	21.50	02.04.18	22.27	During HRSG paralleling STG tripped on Low Main steam temperature as HP Bypass#1 was not following reference properly, and loads on GTs were high for smooth paralleling.
		02.05.18	21.32	02.05.18	22.21	The cold gas temp control valve was fully open under full-module operation with cold gas temp around 43 deg. As GT #2 was stopped in accordance with the system demand, the load on STG #1 reduced to around 95 MW lowering the cold gas temp. With residual activities of isolation of HRSG #2 in progress, command was given to reduce the opening of temp-control-valve. The valve is designed for inching operation. However, the valve closed completely shutting of cooling water supply resulting in high cold-gas temp and leading to protection-trip on the same
		20.05.18	07.35	20.05.18	15.42	STG#1 Stopped due to Common Thermal Overload alarm appeared around 07:35 hrs. Intermittent flashover & smoke observed at Transformer cooling fan supply control -panel at site . All running cooling fans tripped & temperature indication at ECP disappeared. STG#1 Stopped/Tripped manually under the circumstances & panel supply made off.
		16.06.18	08.02	16.06.18	23.59	Unit taken out of DC for solenoid change
		28.06.18	00.50	30.06.18	23.59	DP was running very high so unit taken out of DC for filter replacement.

Unit	Capacity in MW	Outage		Synchronization		Reason of Outage
		Date	Time	Date	Time	
3	216	17.04.18	00.00	30.04.18	23.59	Minor overhauling of Generator and Upgradation of GT#3 and BHM installation.
		29.06.18	00.00	29.06.18	02.00	Desynch due to problem in GCS (BMS not firing).

Unit	Capacity in MW	Outage		Synchronization		Reason of Outage
		Date	Time	Date	Time	
4	216	01.04.18	00.00	16.04.18	18.00	Machine taken out of DC for Planned maintenance.(Combustion inspection)
		22.05.18	15.33			GT#4 came on FSNL at 15:33 hrs. due to AVR fault and subsequent tripping of GCB. Unit was test synch at 16:20 hrs. but due to poor gas pipeline hydraulics GT#4 taken out of DC wef 16:15 hrs..
		22.05.18	16.15	24.05.18	12.30	Due to poor gas pipeline hydraulics GT#4 taken out of DC wef 16:15 hrs..
		24.05.18	21.46	25.05.18	23.59	GT#4 came on FSNL due to AVR fault and subsequent tripping of GCB. Unit was test synch at 22:33 hrs.and stopped at 22:44 hrs due to SLDC backdown.

Unit	Capacity in MW	Outage		Synchronization		Reason of Outage
		Date	Time	Date	Time	
STG-2	254	01.04.18	00.00	30.04.18	23.59	STG#2 tripped on Bucholz relay operated. Transformer is under revival.

(F) RITHALA POWER STATION

Unit	Capacity in MW	Outage		Synchronization		Reason of Outage
		Date	Time	Date	Time	
1	31.8	19.03.13	17:32	30.06.18	23.59	Stopped due to low demand and high frequency

Unit	Capacity in MW	Outage		Synchronization		Reason of Outage
		Date	Time	Date	Time	
2	31.8	07.06.13	22:41	30.06.18	23.59	Stopped due to low demand and high frequency

Unit	Capacity in MW	Outage		Synchronization		Reason of Outage
		Date	Time	Date	Time	
STG	31.8	07.06.13	22:38	30.06.18	23.59	Stopped due to low demand and high frequency

4 ALLOCATION OF POWER TO DELHI

A) Time block 00.00hrs. to 24.00hrs. @ 0% allocation from Unallocated Quota from 01.04.2017

Name of the Stn	Installed capacity	Total Un-allocated	Basic Allocation	Basic Allocation at periphery	Allocation out of Unallocated Quota	Allocation out of Un-allocation Quota at Delhi periphery	Total allocation at Delhi periphery
1	2	3	4	5	6	7	(8)=(5)+(7)
NTPC STATIONS							
Singrauli STPS	2000	300	150	130	0	0	130
Rihand-I	1000	150	100	87	0	0	87
Rihand Stage -II	1000	150	126	109	0	0	109
Rihand Stage -III	1000	150	132	115	0	0	115
ANTA GPS	419	63	44	41	0	0	41
Auriya GPS	663.36	99	72	67	0	0	67
Dadri GPS	829.78	129	91	85	0	0	85
Dadri NCTPS (Th)	840	0	756	657	0	0	657
Dadri NCTPS (Th) Stage-II	980	147	735	639	0	0	639
Unchahaar-I TPS	420	20	24	21	0	0	21
Unchahaar-II TPS	420	63	47	41	0	0	41
Unchahaar-III TPS	210	31	29	25	0	0	25
TOTAL	9782	1302	2306	2016	0	0	2016
NHPC							
Baira Suil HPS	180	0	20	19	0	0	19
Salal HPS	690	0	80	76	0	0	76
Tanakpur HEP	94	0	12	11	0	0	11
Chamera HEP	540	0	43	41	0	0	41
Chamera-II HEP	300	54	40	38	0	0	38
Chamera-III HEP	231	35	29	28	0	0	28
URI-I HEP	480	0	53	50	0	0	50
URI-II HEP	240	0	32	31	0	0	31
Sewa HEP	120	18	16	15	0	0	15
Dhaulti Ganga HEP	280	42	37	35	0	0	35
Dulhasti HEP	390	58	50	48	0	0	48
Parbati-III HEP	520	66	66	63	0	0	63
TOTAL	4065	272	479	455	0	0	455
NPC							
Narora APS	440	64	47	41	0	0	41
RAPP (C)	440	64	56	49	0	0	49
TOTAL	880	128	103	89	0	0	89
SJVNL							
Nathpa Jhakri HEP	1500	149	142	135	0	0	135
THDC							
Tehri Hydro	1000	99	63	60	0	0	60
Koteshwar HEP	400	40	39	37	0	0	37
TOTAL	1400	139	102	97	0	0	97
Total	17627	1990	3132	2793	0	0	2793
Allocation from ER and Tala HEP							
Farakka	1600	0	22	19	0	0	19
Kahalgaon	840	0	51	43	0	0	43
Talchar	1000	0	0	0	0	0	0
Tala HEP	1020	153	30	25	0	0	25
Kahalgaon-II	1500	0	157	131	0	0	131
Total ER	5960	153	261	217	0	0	217
Joint Venture							
Jhajjar TPS	1500	114	693	622	0	0	622
Ultra Mega Projects							
Sasan	3960	0	446	400	0	0	400
Grand Total	29047	2257	4531	4032	0	0	4032

5 ALLOCATION OF POWER TO DISCOMS

A) ALLOCATION OF POWER TO VARIOUS LICENCEES AS PER ORDER OF DERC AND DECISION OF GNCTD FOR ALLOCATION OF CENTRAL SECTOR STATIONS (DADRI THERMAL & BTPS) AND STATE SECTOR GENERATING STATIONS w.e.f. 06.08.2013.

(Allocation In %)

(A) 10.00hrs. to 17.00hrs.

SOURCES	LICENSEES					
	NDMC	MES	NDPL	BRPL	BYPL	TOTAL
1. Central Sector without Dadri (Th)	0	0	29.18	43.58	27.24	100.00
2. Dadri (Th)	16.63	0	24.22	36.86	22.39	100.00
3. BTPS	17.73	7.09	21.81	33.2	20.17	100.00
4. RPH	0	0	29.025	44.133	26.842	100.00
5. GT	0	0	29.02	44.16	26.82	100.00
6. Pragati	30.3	0	20.22	30.78	18.7	100.00
7. DVC	0	0	29.18	43.58	27.24	100.00
8. BAWANA CCGT*	7.30	1.82	20.688	30.888	19.304	80.00

(B) 00.00hrs. to 10.00hrs. and 17.00hrs. to 24.00hrs.

SOURCES	LICENSEES					
	NDMC	MES	NDPL	BRPL	BYPL	TOTAL
1. Central Sector without Dadri (Th)	0	0	29.18	43.58	27.24	100.00
2. Dadri (Th)	16.53	0	24.22	36.86	22.39	100.00
3. BTPS	17.73	7.09	21.81	33.2	20.17	100.00
4. RPH	0	0	29.025	44.133	26.842	100.00
5. GT	0	0	29.02	44.16	26.82	100.00
6. Pragati	30.3	0	20.22	30.78	18.7	100.00
7. DVC	0	0	29.18	43.58	27.24	100.00
8. BAWANA CCGT*	7.30	1.82	20.688	30.888	19.304	80.00

* 20% POWER OF BAWANA CCGT ALLOCATED TO HARYANA (10%) & PUNJAB (10%)

6 POWER AVAILABILITY-DEMAND POSITION AT THE TIME OF PEAK DEMAND MET DURING JUN 2018

Date	Time of peak demand	Generation within Delhi										Import from the Grid	Schedule from the Grid	OD(-)/UD(+)	Demand met	Shedding	Un-Restricted Demand
		RP H	GT	PPCL	Rithala	Bawana	Towmcl	East Delhi	DMS WL	BTPS	Total						
(1)	(2)	(3)	(4)	(5)	(6)	(7)	(8)				(9)=(3) to (8)	(10)	(11)	(12)=(11)-(10)	(13)=(11)+(12)	(14)	(15)=(13)+(14)
1	15.36.37	0	134	268	0	599	18	3	5	303	1330	5321	5287	34	6651	0	6651
2	15.25.17	0	0	261	0	425	19	0	9	316	1030	4606	4657	-51	5636	0	5636
3	23.36.39	0	40	266	0	428	18	4	18	296	1070	4885	4977	-92	5955	0	5955
4	15.36.20	0	112	279	0	472	16	3	15	335	1232	5206	5184	22	6438	11	6449
5	15.45.52	0	138	274	0	534	18	-2	15	340	1317	5245	5304	-59	6562	3	6565
6	00.01.22	0	143	258	0	470	16	3	16	324	1230	5147	5121	26	6377	7	6384
7	15.20.39	0	133	275	0	507	18	3	18	338	1292	5276	5304	-28	6568	0	6568
8	15.28.33	0	137	282	0	665	16	3	18	371	1492	5442	5447	-5		3	#VALUE!
9	15.21.51	0	145	258	0	585	17	4	19	305	1333	5086	5057	29	6419	0	6419
10	23.42.32	0	77	260	0	431	17	2	13	306	1106	4846	4884	-38	5952	0	5952
11	15.14.47	0	146	262	0	493	14	0	14	294	1223	5189	5274	-85	6412	0	6412
12	15.35.18	0	146	260	0	425	16	-1	12	325	1183	5506	5504	2	6689	0	6689
13	15.26.20	0	119	265	0	456	16	5	15	327	1203	5467	5558	-91	6670	0	6670
14	15.31.20	0	122	279	0	429	17	3	12	304	1166	5455	5509	-54	6621	0	6621
15	00.02.38	0	134	265	0	427	18	3	17	299	1163	5285	5280	5	6448	4	6452
16	00.00.00	0	134	263	0	432	18	3	16	305	1171	5083	5083	0	6254	0	6254
17	00.00.08	0	138	258	0	434	19	3	3	307	1162	4844	4789	55	6006	0	6006
18	15.36.46	0	67	261	0	431	18	3	6	313	1099	4722	4718	4	5821	0	5821
19	23.33.56	0	69	258	0	446	18	4	17	309	1121	4906	4957	-51	6027	0	6027
20	15.33.31	0	120	279	0	726	19	4	17	368	1533	4723	4678	45	6256	0	6256
21	15.36.29	0	123	267	0	801	16	4	17	353	1581	4808	4994	-186	6389	14	6403
22	15.15.09	0	121	275	0	688	16	4	16	309	1429	5270	5272	-2	6699	0	6699
23	00.00.19	0	131	274	0	713	16	2	17	325	1478	4994	5089	-95	6472	0	6472
24	23.40.52	0	128	269	0	554	18	2	17	311	1299	5054	5001	53	6353	0	6353
25	15.27.36	0	123	267	0	673	16	3	17	368	1467	5381	5325	56	6848	0	6848
26	00.00.00	0	122	274	0	543	18	4	17	310	1288	5224	5142	82	6512	6	6518
27	14.57.21	0	95	259	0	428	0	2	19	306	1109	5009	4848	161	6118	0	6118
28	15.33.40	0	114	263	0	261	0	3	12	309	962	4709	4490	219	5671	0	5671
29	15.06.43	0	129	265	0	275	0	1	16	316	1002	4496	4660	-164	5498	0	5498
30	23.00.44	0	67	269	0	302	0	2	12	329	981	4668	4671	-3	5649	0	5649
31																	

POWER AVAILABILITY- DEMAND POSITION AT THE TIME OF MAXIMUM UNRESTRICTED DEMAND DURING JUN 2018

Date	Time of peak demand	Generation within Delhi										Import from the Grid	Schedule from the Grid	OD(-)/UD(+)	Demand met	Shedding	Un-Restricted Demand
		RP H	GT	PPCL	Rithal a	Bawana	Tow mcl	East Delhi	DMS WL	BTPS	Total						
(1)	(2)	(3)	(4)	(5)	(6)	(7)	(8)				(9)= (3) to (8)	(10)	(11)	(12)= (11)-(10)	(13)= (11)+(12)	(14)	(15)= (13)+(14)
1	15.36.37	0	134	268	0	599	18	3	5	303	1330	5321	5287	34	6651	0	6651
2	15.25.17	0	0	261	0	425	19	0	9	316	1030	4606	4657	-51	5636	0	5636
3	23.36.39	0	40	266	0	428	18	4	18	296	1070	4885	4977	-92	5955	0	5955
4	15.36.20	0	112	279	0	472	16	3	15	335	1232	5206	5184	22	6438	11	6449
5	15.45.52	0	138	274	0	534	18	-2	15	340	1317	5245	5304	-59	6562	3	6565
6	00.01.22	0	143	258	0	470	16	3	16	324	1230	5147	5121	26	6377	7	6384
7	15.20.39	0	133	275	0	507	18	3	18	338	1292	5276	5304	-28	6568	0	6568
8	15.28.33	0	137	282	0	665	16	3	18	371	1492	5442	5447	-5		3	#VALUE !
9	15.21.51	0	145	258	0	585	17	4	19	305	1333	5086	5057	29	6419	0	6419
10	23.42.32	0	77	260	0	431	17	2	13	306	1106	4846	4884	-38	5952	0	5952
11	15.14.47	0	146	262	0	493	14	0	14	294	1223	5189	5274	-85	6412	0	6412
12	15.35.18	0	146	260	0	425	16	-1	12	325	1183	5506	5504	2	6689	0	6689
13	15.26.20	0	119	265	0	456	16	5	15	327	1203	5467	5558	-91	6670	0	6670
14	15.31.20	0	122	279	0	429	17	3	12	304	1166	5455	5509	-54	6621	0	6621
15	00.02.38	0	134	265	0	427	18	3	17	299	1163	5285	5280	5	6448	4	6452
16	00.00.00	0	134	263	0	432	18	3	16	305	1171	5083	5083	0	6254	0	6254
17	00.00.08	0	138	258	0	434	19	3	3	307	1162	4844	4789	55	6006	0	6006
18	15.36.46	0	67	261	0	431	18	3	6	313	1099	4722	4718	4	5821	0	5821
19	23.33.56	0	69	258	0	446	18	4	17	309	1121	4906	4957	-51	6027	0	6027
20	15.33.31	0	120	279	0	726	19	4	17	368	1533	4723	4678	45	6256	0	6256
21	15.36.29	0	123	267	0	801	16	4	17	353	1581	4808	4994	-186	6389	14	6403
22	15.15.09	0	121	275	0	688	16	4	16	309	1429	5270	5272	-2	6699	0	6699
23	00.00.19	0	131	274	0	713	16	2	17	325	1478	4994	5089	-95	6472	0	6472
24	23.40.52	0	128	269	0	554	18	2	17	311	1299	5054	5001	53	6353	0	6353
25	15.27.36	0	123	267	0	673	16	3	17	368	1467	5381	5325	56	6848	0	6848
26	00.00.00	0	122	274	0	543	18	4	17	310	1288	5224	5142	82	6512	6	6518
27	14.57.21	0	95	259	0	428	0	2	19	306	1109	5009	4848	161	6118	0	6118
28	15.33.40	0	114	263	0	261	0	3	12	309	962	4709	4490	219	5671	0	5671
29	15.06.43	0	129	265	0	275	0	1	16	316	1002	4496	4660	-164	5498	0	5498
30	23.00.44	0	67	269	0	302	0	2	12	329	981	4668	4671	-3	5649	0	5649

SOURCEWISE SCHEDULED DRAWL FROM NORTHERN GRID AS WELL AS AVAILABILITY WITHIN DELHI FOR JUN 2018

A) AVAILABILITY FROM GENCO AND PRAGATI STNs. (all fig in MUs)

A (i) RPH	0.000
(ii) GT+STG	89.957
(iii) PRAGATI	196.547
(iv) RITHALA	0.000
(v) BAWANA CCGT	350.778
(vi) Timarpur – Okhla	12.838
EDWPCL	2.915
DMSWL	12.338
TOTAL	664.373
B) AVAILABILITY FROM BTPS	220.002
C) AUXILIARY CONSUMPTION OF GENERATING STNs. EXCLUDING BTPS	25.652
D) NET GENERATION AVAILABLE WITHIN DELHI(A+B-C)	858.723

B) SOURCE WISE SCHEDULED DRAWL FROM THE NORTHERN GRID

NAME OF THE STATION	AVAILABILITY AT POWER PLANT	AVAILABILITY AT DELHI PERIPHERY	ALLOCATION MADE BY NRLDC AT POWER PLANT	ALLOCATION MADE BY NRLDC AT DELHI PERIPHERY
B/SUIL	5.045	4.927	5.045	4.927
SALAL	54.470	53.501	54.470	53.501
SASAN	292.660	283.176	288.275	278.918
TANKAPUR	4.508	4.404	4.508	4.405
CHAMERA	21.620	21.253	21.620	21.253
CHAMERA -II	24.984	24.526	24.984	24.526
CHAMERA -III	17.582	17.279	17.582	17.279
DHAULIGANGA	17.897	17.580	17.897	17.580
SEWA -2	2.867	2.814	2.867	2.814
URI	33.095	32.377	33.105	32.386
URI-II	21.888	21.401	21.985	21.497
KOLDAM	0.000	0.000	0.000	0.000
KOTESHWAR	9.317	9.115	9.317	9.115
PARBATI3	8.842	8.674	8.842	8.674
RAMPUR	0.000	0.000	0.000	0.000
MUNDRA_UMPP	0.000	0.000	0.000	0.000
ANTA (GAS)	0.000	0.000	0.000	0.000
ANTA (RLNG)	20.437	19.803	0.007	0.007
ANTA (LIQUID)	6.924	6.709	0.000	0.000
DADRI (GAS)	10.842	10.686	4.459	4.398
DADRI (RLNG)	13.487	13.269	0.050	0.049
DADRI (LIQUID)	24.018	23.672	0.000	0.000
AURAIYA (GAS)	0.000	0.000	0.000	0.000
AURAIYA (RLNG)	13.330	13.035	0.000	0.000
AURAIYA (LIQUID)	32.570	31.770	0.000	0.000
SINGRAULI	77.390	75.113	72.681	70.540
SINGRAULI_HYDRO	0.385	0.374	0.385	0.374
RIHAND -I	61.758	59.921	57.291	55.586
RIHAND -II	49.381	47.893	46.086	44.693
RIHAND -III	81.434	79.018	70.334	68.243
UNCHAHAR-I	15.351	15.051	12.129	11.892
UNCHAHAR-II	30.690	30.089	24.088	23.615
UNCHAHAR-III	18.933	18.562	14.779	14.487
UNCHAHAR-IV	0.000	0.000	0.000	0.000
DADRI (TH)	497.381	490.115	339.692	334.730
DADRI (TH) STAGE-II	468.451	461.644	390.127	384.437
NAPP	25.882	25.270	25.882	25.270
RAPP 'B'	0.000	0.000	0.000	0.000
RAPP 'C'	37.199	36.041	37.199	36.041
NATHPA JHAKRI	99.184	97.035	99.184	97.035
DULASTI	33.322	32.715	33.322	32.715

NAME OF THE STATION	AVAILABILITY AT POWER PLANT	AVAILABILITY AT DELHI PERIPHERY	ALLOCATION MADE BY NRLDC AT POWER PLANT	ALLOCATION MADE BY NRLDC AT DELHI PERIPHERY
TEHRI	10.833	10.598	10.833	10.598
JHAJJAR	341.323	336.340	252.217	248.547
KHELGAON	30.757	30.134	25.415	24.897
KHELGAON-II	80.401	78.751	70.469	69.020
FARAKA	14.063	13.836	11.161	10.981
TALA	10.904	10.695	10.904	10.695
TALCHER	0.000	0.000	0.000	0.000
DVC	182.662	181.351	181.351	180.322
JHARKHAND	21.792	21.638	21.638	21.513
GUJRAT	0.111	0.110	0.110	0.109
MEGHALAYA	50.733	50.232	50.232	49.947
MAHARASHTRA	0.068	0.067	0.067	0.066
HARYANA	0.403	0.399	0.399	0.396
MADHYA PRADESH	53.071	52.480	52.480	52.171
METHON POWER(NDPL)LT-06	166.340	165.147	165.147	164.210
DVC MEJIA (LT-08)(BYPL)	63.017	62.563	62.563	62.209
URS	0.000	0.000	0.000	0.000
JAMMU & KASHMIR	67.845	67.232	67.232	66.851
HIMACHAL PRADESH	428.818	422.446	422.446	420.050
DB POWR (CHATTISHGARH)	0.081	0.080	0.080	0.079
MIZORAM	6.647	6.515	6.515	6.478
NAGALAND	1.569	1.557	1.557	1.548
DVC LT-9	0.000	0.000	0.000	0.000
HARYANA (LT-05)	42.375	42.077	42.077	41.840
SIKKIM	9.180	9.042	9.042	8.993
GCEL (GURGAON)	18.869	18.729	18.729	18.623
ORISSA MT-20 JITPL -DVC	4.731	4.686	4.686	4.659
TAMILNAIDU	10.956	10.871	10.871	10.809
ANDHRA PRADESH	7.666	7.611	7.611	7.569
ADHPL (HP KULLU)	6.076	5.986	5.986	5.952
JHABUA (MP)	1.989	1.968	1.968	1.958
RAJASTHAN(SOLAR) BRPL-LT36	3.258	3.185	3.185	3.167
RAJASTHAN(SOLAR) BYPL - LT-35	3.423	3.345	3.345	3.327
RAJASTHAN(SOLAR) TPDDL LT-31	3.184	3.113	3.113	3.095
TO JHARKHAND	-0.763	-0.771	-0.771	-0.779
TO ANDHRA	0.000	0.000	0.000	0.000
TO MADHYA PRADESH	0.000	0.000	0.000	0.000
TO WEST BENGAL	0.000	0.000	0.000	0.000
TO UTTAR PRADESH	0.000	0.000	0.000	0.000
TO J&K	0.000	0.000	0.000	0.000
TO TAMILNADU	0.000	0.000	0.000	0.000
TO GOA	0.000	0.000	0.000	0.000
TO MEGHALAYA	0.000	0.000	0.000	0.000
TO MANIPUR	0.000	0.000	0.000	0.000
BTPS TO MP	0.000	0.000	0.000	0.000
TO HIMACHAL PRADESH	-2.967	-3.025	-3.025	-3.060
TO HARYANA	-0.390	-0.398	-0.398	-0.403
POWER EXCHANGE(IEX)	20.068	19.959	20.068	19.959
TO POWER EXCHANGE (IEX)	-295.226	-297.960	-295.226	-297.960
POWER EXCHANGE(PX)	0.000	0.000	0.000	0.000
TO POWER EXCHANGE (PX)	0.000	0.000	0.000	0.000
TO SHARE PROJECT (HARYANA)	-17.896	-18.059	-17.896	-18.059
TO SHARE PROJECT (PUNJAB)	-17.878	-18.040	-17.878	-18.040
TOTAL	3461.215	3393.301	2946.495	2893.326

C) AGENCY WISE BREAKUP OF ENERGY SCHEDULED DRAWL FROM THE GRID

NAME OF THE STATION	AVAILABILITY AT POWER PLANT	AVAILABILITY AT DELHI PERIPHERY	ALLOCATION MADE BY NRLDC AT POWER PLANT	ALLOCATION MADE BY NRLDC AT DELHI PERIPHERY
NTPC - NR	1422.763	1396.724	1032.109	1013.052
NTPC - ER	125.221	122.721	107.045	104.898
NHPC	246.120	241.452	246.227	241.557
NPC	63.081	61.311	63.081	61.311
SASAN	292.660	283.176	288.275	278.918
KOTESHWAR	9.317	9.115	9.317	9.115
MUNDRA_UMPP	0.000	0.000	0.000	0.000
NATHPA JHAKRI	99.184	97.035	99.184	97.035
TEHRI	10.833	10.598	10.833	10.598
TALA	10.904	10.695	10.904	10.695
JHAJJAR	341.323	336.340	252.217	248.547
TALCHER	0.000	0.000	0.000	0.000
RAJASTHAN SOLAR(BRPL)T-36	3.258	3.185	3.185	3.167
RAJASTHAN SOLAR(BYPL)T-35	3.423	3.345	3.345	3.327
RAJASTHAN SOLAR(TPDDL)T-31	3.184	3.113	3.113	3.095
DVC	182.662	181.351	181.351	180.322
JHARKHAND	21.792	21.638	21.638	21.513
GUJRAT	0.111	0.110	0.110	0.109
MEGHALAYA	50.733	50.232	50.232	49.947
MAHARASHTRA	0.068	0.067	0.067	0.066
HARYANA	0.403	0.399	0.399	0.396
MADHYA PRADESH	53.071	52.480	52.480	52.171
METHON POWER (NDPL)-LT-06	166.340	165.147	165.147	164.210
DVC MEJIA (LT-08)(BYPL)	63.017	62.563	62.563	62.209
URS	0.000	0.000	0.000	0.000
JAMMU & KASHMIR	67.845	67.232	67.232	66.851
HIMACHAL PRADESH	428.818	422.446	422.446	420.050
DB POWER (CHATTISHGARH)	0.081	0.080	0.080	0.079
MIZORAM	6.647	6.515	6.515	6.478
NAGALAND	1.569	1.557	1.557	1.548
DVC (FOR NDPL) LT-09	0.000	0.000	0.000	0.000
HARYANA (LT -05)	42.375	42.077	42.077	41.840
SIKKIM	9.180	9.042	9.042	8.993
GCEL (GURGAON)	18.869	18.729	18.729	18.623
ORISSA MT-20 JITPL -DVC	4.731	4.686	4.686	4.659
TAMILNAIDU	10.956	10.871	10.871	10.809
ANDHRA PRADESH	7.666	7.611	7.611	7.569
ADHPL (HP KULLU)	6.076	5.986	5.986	5.952
JHABUA (MP)	1.989	1.968	1.968	1.958
POWER EXCHANGE(IEX)	20.068	19.959	20.068	19.959
POWER EXCHANGE(PX)	0.000	0.000	0.000	0.000
TOTAL	3796.335	3731.554	3281.688	3231.627

D) AGENCY WISE BREAKUP OF ENERGY SCHEDULED BY NRLDC FOR EXPORT TO OTHER UTILITIES FROM DTL

NAME OF THE STATION	AVAILABILITY AT POWER PLANT	AVAILABILITY AT PERIPHERY	ALLOCATION MADE BY NRLDC AT POWER PLANT	ALLOCATION MADE BY NRLDC AT POWER PERIPHERY
TO JHARKHAND	-0.763	-0.771	-0.771	-0.779
TO ANDHRA	0.000	0.000	0.000	0.000
TO MADHYA PRADESH	0.000	0.000	0.000	0.000
TO WEST BENGAL	0.000	0.000	0.000	0.000
TO J&K	0.000	0.000	0.000	0.000
TO UTTAR PRADESH	0.000	0.000	0.000	0.000
TO TAMILNADU	0.000	0.000	0.000	0.000
TO GOA	0.000	0.000	0.000	0.000
TO MEGHALAYA	0.000	0.000	0.000	0.000
TO MANIPUR	0.000	0.000	0.000	0.000
BTPS TO MP	0.000	0.000	0.000	0.000
TO HIMACHAL PRADESH	-2.967	-3.025	-3.025	-3.060
TO HARYANA	-0.390	-0.398	-0.398	-0.403
TO POWER EXCHANGE (IEX)	-295.226	-297.960	-295.226	-297.960
TO POWER EXCHANGE (PX)	0.000	0.000	0.000	0.000
TO SHARE PROJECT (HARYANA)	-17.896	-18.059	-17.896	-18.059
TO SHARE PROJECT (PUNJAB)	-17.878	-18.040	-17.878	-18.040
TOTAL	-335.120	-338.253	-335.193	-338.301
TOTAL SCHEDULED DRAWAL FROM THE GRID	3461.215	3393.301	2946.495	2893.326

TOTAL CONSUMPTION INCLUDING AUX. OF GENERATING STNs. EXCLUDING BTPS	3846.565
NET CONSUMPTION	3820.913
AVAILABILITY WITHIN DELHI	858.723
ACTUAL DRAWAL FROM THE GRID	2962.190
OVER DRAWAL(+)/UNDER DRAWAL(-) FROM THE GRID ON THE BASIS OF SCHEDULED ALLOCATION MADE BY NRLDC TO DELHI AT PERIPHERY	68.864
LOAD SHEDDING	2.695
UNRESTRICTED DEMAND (GROSS)	3849.260
UNRESTRICTED DEMAND (NET)	3823.608
MAX. NET CONSUMPTION	139.383 ON 13.06.2018
MAX. LOAD SHEDDING	179MW ON 09.06.2018 AT 17.30HRS.
PEAK LOAD	Peak Demand during the month
DAY PEAK	3934MW AT 15.28.33 HRS ON 08.06.2018
EVENING PEAK	6555MW AT 23.00.00HRS ON 25.06.2018
P.L.F. OF GENCO AND PRAGATI STNs.	RPH GT PRAGATI RITHALA BAWANA Timarpur Okhla EDWPCL DMSWL
	0.00% 45.76% 82.72% 0.00% 35.54% 111.44% 33.74% 71.40%

SHEDDING DETAILS DURING THE MONTH OF JUN 2018.

ALL FIGURES IN MUs

DATE	No. of Under Freq. Relay Operated	Shedding due to under frequency relay operation in MUs					Shedding due to Grid Restrictions (Over drawl / low freq.)				
		BSES		NDPL	NDMC	TOTAL	BSES		NDPL	NDMC	MES
		BYPL	BRPL				BYPL	BRPL			
1	2	3	4	5	6	7=3 to 6	8	9	10	11	12
01.Jun.18	0	0.000	0.000	0.000	0.000	0.000	0.000	0.000	0.000	0.000	0.000
02.Jun.18	0	0.000	0.000	0.000	0.000	0.000	0.000	0.000	0.000	0.000	0.000
03.Jun.18	0	0.000	0.000	0.000	0.000	0.000	0.000	0.000	0.000	0.000	0.000
04.Jun.18	0	0.000	0.000	0.000	0.000	0.000	0.000	0.000	0.000	0.000	0.000
05.Jun.18	0	0.000	0.000	0.000	0.000	0.000	0.000	0.000	0.000	0.000	0.000
06.Jun.18	0	0.000	0.000	0.000	0.000	0.000	0.000	0.000	0.000	0.000	0.000
07.Jun.18	0	0.000	0.000	0.000	0.000	0.000	0.000	0.000	0.000	0.000	0.000
08.Jun.18	0	0.000	0.000	0.000	0.000	0.000	0.000	0.000	0.000	0.000	0.000
09.Jun.18	0	0.000	0.000	0.000	0.000	0.000	0.000	0.000	0.000	0.000	0.000
10.Jun.18	0	0.000	0.000	0.000	0.000	0.000	0.000	0.000	0.000	0.000	0.000
11.Jun.18	0	0.000	0.000	0.000	0.000	0.000	0.000	0.000	0.000	0.000	0.000
12.Jun.18	0	0.000	0.000	0.000	0.000	0.000	0.000	0.000	0.000	0.000	0.000
13.Jun.18	0	0.000	0.000	0.000	0.000	0.000	0.000	0.000	0.000	0.000	0.000
14.Jun.18	0	0.000	0.000	0.000	0.000	0.000	0.000	0.000	0.000	0.000	0.000
15.Jun.18	0	0.000	0.000	0.000	0.000	0.000	0.000	0.000	0.000	0.000	0.000
16.Jun.18	0	0.000	0.000	0.000	0.000	0.000	0.000	0.000	0.000	0.000	0.000
17.Jun.18	0	0.000	0.000	0.000	0.000	0.000	0.000	0.000	0.000	0.000	0.000
18.Jun.18	0	0.000	0.000	0.000	0.000	0.000	0.000	0.000	0.000	0.000	0.000
19.Jun.18	0	0.000	0.000	0.000	0.000	0.000	0.000	0.000	0.008	0.000	0.000
20.Jun.18	0	0.000	0.000	0.000	0.000	0.000	0.000	0.000	0.000	0.000	0.000
21.Jun.18	0	0.000	0.000	0.000	0.000	0.000	0.000	0.000	0.000	0.000	0.000
22.Jun.18	0	0.000	0.000	0.000	0.000	0.000	0.000	0.000	0.000	0.000	0.000
23.Jun.18	0	0.000	0.000	0.000	0.000	0.000	0.000	0.000	0.000	0.000	0.000
24.Jun.18	0	0.000	0.000	0.000	0.000	0.000	0.000	0.000	0.000	0.000	0.000
25.Jun.18	0	0.000	0.000	0.0001	0.000	0.000	0.000	0.000	0.000	0.000	0.000
26.Jun.18	0	0.000	0.000	0.000	0.000	0.000	0.000	0.000	0.000	0.000	0.000
27.Jun.18	0	0.000	0.000	0.000	0.000	0.000	0.000	0.000	0.000	0.000	0.000
28.Jun.18	0	0.000	0.000	0.000	0.000	0.000	0.000	0.000	0.000	0.000	0.000
29.Jun.18	0	0.000	0.000	0.000	0.000	0.000	0.000	0.000	0.000	0.000	0.000
30.Jun.18	0	0.000	0.000	0.000	0.000	0.000	0.000	0.000	0.000	0.000	0.000
TOTAL	0	0.000	0.000	0.000	0.000	0.000	0.000	0.000	0.008	0.000	0.000

ALL FIGURES IN MUs

Date	Shedding due to Transmission/Grid Constraints in Central Sector Stations / TTC / ATC VOILATION				DUE TO NEW GRID CODE REGULATION DEVIATION			Shedding due to Transmission/Grid Constraints in Central sector stations				Total	Total shedding due to grid restrictions
	BSES		NDPL	NDMC	BSES		TPDDL	BSES		TPDDL	NDMC		
	BYPL	BRPL			BYPL	BRPL		BYPL	BRPL				
	13	14	15	16	17	18	19	20	21	22	23	24=8 to 23	25=7+24
01.Jun.18	0.000	0.000	0.000	0.000	0.000	0.000	0.000	0.000	0.000	0.000	0.000	0.000	0.000
02.Jun.18	0.000	0.000	0.000	0.000	0.000	0.000	0.000	0.000	0.000	0.000	0.000	0.000	0.000
03.Jun.18	0.000	0.000	0.000	0.000	0.000	0.000	0.000	0.000	0.000	0.000	0.000	0.000	0.000
04.Jun.18	0.000	0.000	0.000	0.000	0.000	0.000	0.000	0.000	0.000	0.000	0.000	0.000	0.000
05.Jun.18	0.000	0.000	0.000	0.000	0.000	0.000	0.000	0.000	0.000	0.000	0.000	0.000	0.000
06.Jun.18	0.000	0.000	0.000	0.000	0.000	0.000	0.000	0.000	0.000	0.000	0.000	0.000	0.000
07.Jun.18	0.000	0.000	0.000	0.000	0.000	0.000	0.000	0.000	0.000	0.000	0.000	0.000	0.000
08.Jun.18	0.000	0.000	0.000	0.000	0.000	0.000	0.000	0.000	0.000	0.000	0.000	0.000	0.000
09.Jun.18	0.000	0.000	0.000	0.000	0.000	0.000	0.000	0.000	0.000	0.000	0.000	0.000	0.000
10.Jun.18	0.000	0.000	0.000	0.000	0.000	0.000	0.000	0.000	0.000	0.000	0.000	0.000	0.000
11.Jun.18	0.000	0.000	0.000	0.000	0.000	0.000	0.000	0.000	0.000	0.000	0.000	0.000	0.000
12.Jun.18	0.000	0.000	0.000	0.000	0.000	0.000	0.000	0.000	0.000	0.000	0.000	0.000	0.000
13.Jun.18	0.000	0.000	0.000	0.000	0.000	0.000	0.000	0.000	0.000	0.000	0.000	0.000	0.000
14.Jun.18	0.000	0.000	0.000	0.000	0.000	0.000	0.000	0.000	0.000	0.000	0.000	0.000	0.000
15.Jun.18	0.000	0.000	0.000	0.000	0.000	0.000	0.000	0.000	0.000	0.000	0.000	0.000	0.000
16.Jun.18	0.000	0.000	0.000	0.000	0.000	0.000	0.000	0.000	0.000	0.000	0.000	0.000	0.000
17.Jun.18	0.000	0.000	0.000	0.000	0.000	0.000	0.000	0.000	0.000	0.000	0.000	0.000	0.000
18.Jun.18	0.000	0.000	0.000	0.000	0.000	0.000	0.000	0.000	0.000	0.000	0.000	0.000	0.000
19.Jun.18	0.000	0.000	0.000	0.000	0.000	0.000	0.000	0.000	0.000	0.000	0.000	0.008	0.008
20.Jun.18	0.000	0.000	0.000	0.000	0.000	0.000	0.000	0.000	0.000	0.000	0.000	0.000	0.000
21.Jun.18	0.000	0.000	0.000	0.000	0.000	0.000	0.000	0.000	0.000	0.000	0.000	0.000	0.000
22.Jun.18	0.000	0.000	0.000	0.000	0.000	0.000	0.000	0.000	0.000	0.000	0.000	0.000	0.000
23.Jun.18	0.000	0.000	0.000	0.000	0.000	0.000	0.000	0.000	0.000	0.000	0.000	0.000	0.000
24.Jun.18	0.000	0.000	0.000	0.000	0.000	0.000	0.000	0.000	0.000	0.000	0.000	0.000	0.000
25.Jun.18	0.000	0.000	0.000	0.000	0.000	0.000	0.000	0.000	0.000	0.000	0.000	0.000	0.000
26.Jun.18	0.000	0.000	0.000	0.000	0.000	0.000	0.000	0.000	0.000	0.000	0.000	0.000	0.000
27.Jun.18	0.000	0.000	0.000	0.000	0.000	0.000	0.000	0.000	0.000	0.000	0.000	0.000	0.000
28.Jun.18	0.000	0.000	0.000	0.000	0.000	0.000	0.000	0.000	0.000	0.000	0.000	0.000	0.000
29.Jun.18	0.000	0.000	0.000	0.000	0.000	0.000	0.000	0.000	0.000	0.000	0.000	0.000	0.000
30.Jun.18	0.000	0.000	0.000	0.000	0.000	0.000	0.000	0.000	0.000	0.000	0.000	0.000	0.000
TOTAL	0.000	0.000	0.000	0.000	0.000	0.000	0.000	0.000	0.000	0.000	0.000	0.008	0.008

ALL FIGURES IN MUs

Date	DUE TO T&D CONSTRAINTS IN DELHI SYSTEM								
	DTL					DISCOMS			
	BSES		NDPL	NDMC	MES	BSES		NDPL	NDMC
	BYPL	BRPL				BYPL	BRPL		
26	27	28	29	30	31	32	33	34	
01.Jun.18	0.000	0.000	0.000	0.000	0.000	0.000	0.115	0.012	0.000
02.Jun.18	0.000	0.000	0.000	0.000	0.000	0.000	0.029	0.013	0.000
03.Jun.18	0.000	0.000	0.000	0.000	0.000	0.000	0.031	0.000	0.000
04.Jun.18	0.006	0.000	0.000	0.000	0.000	0.000	0.043	0.001	0.000
05.Jun.18	0.000	0.000	0.000	0.000	0.000	0.000	0.030	0.009	0.000
06.Jun.18	0.000	0.000	0.000	0.000	0.000	0.000	0.115	0.000	0.000
07.Jun.18	0.000	0.000	0.000	0.000	0.000	0.000	0.035	0.001	0.000
08.Jun.18	0.000	0.000	0.000	0.000	0.000	0.134	0.095	0.002	0.000
09.Jun.18	0.001	0.000	0.005	0.000	0.000	0.017	0.336	0.026	0.000
10.Jun.18	0.000	0.000	0.001	0.000	0.000	0.011	0.070	0.000	0.000
11.Jun.18	0.000	0.000	0.000	0.000	0.000	0.000	0.132	0.005	0.000
12.Jun.18	0.000	0.000	0.000	0.000	0.000	0.010	0.105	0.001	0.000
13.Jun.18	0.000	0.000	0.000	0.000	0.000	0.000	0.070	0.010	0.000
14.Jun.18	0.000	0.000	0.000	0.000	0.000	0.013	0.086	0.016	0.000
15.Jun.18	0.000	0.000	0.000	0.000	0.000	0.000	0.071	0.008	0.000
16.Jun.18	0.000	0.052	0.000	0.000	0.000	0.000	0.042	0.000	0.000
17.Jun.18	0.004	0.000	0.000	0.000	0.000	0.002	0.002	0.006	0.000
18.Jun.18	0.000	0.000	0.000	0.000	0.000	0.000	0.068	0.010	0.000
19.Jun.18	0.000	0.000	0.000	0.000	0.000	0.006	0.009	0.000	0.000
20.Jun.18	0.000	0.000	0.000	0.000	0.000	0.000	0.000	0.002	0.000
21.Jun.18	0.000	0.015	0.000	0.000	0.000	0.000	0.118	0.000	0.000
22.Jun.18	0.003	0.000	0.000	0.000	0.000	0.000	0.054	0.003	0.000
23.Jun.18	0.000	0.000	0.000	0.000	0.000	0.000	0.058	0.008	0.000
24.Jun.18	0.023	0.000	0.000	0.000	0.000	0.005	0.014	0.003	0.000
25.Jun.18	0.000	0.000	0.000	0.000	0.000	0.021	0.036	0.000	0.000
26.Jun.18	0.000	0.000	0.000	0.000	0.000	0.000	0.004	0.017	0.000
27.Jun.18	0.003	0.017	0.000	0.000	0.000	0.000	0.101	0.000	0.000
28.Jun.18	0.005	0.000	0.027	0.000	0.000	0.003	0.048	0.103	0.000
29.Jun.18	0.002	0.010	0.000	0.005	0.000	0.000	0.006	0.041	0.008
30.Jun.18	0.007	0.003	0.000	0.007	0.000	0.000	0.003	0.001	0.000
TOTAL	0.054	0.097	0.033	0.012	0.000	0.222	1.926	0.298	0.008

ALL FIGURES IN MU's

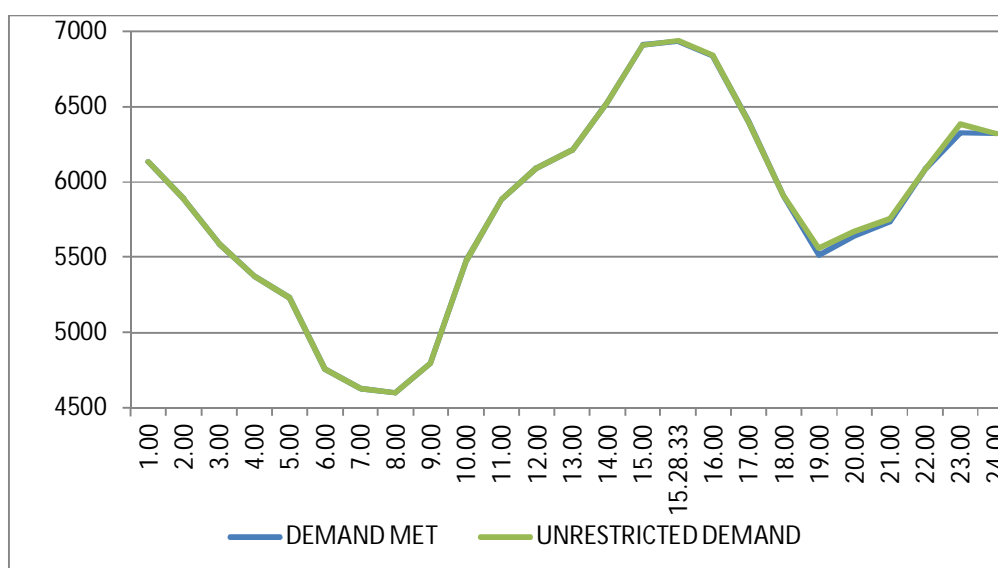
DATE	OTHER AGENCIES LIKE GENCO, BBMB, BTPS ETC.				THEFT PRONE SHEDDING			TOTAL SHEDDING DUE TO T&D CONSTS. & THEFT PRONE	GRAND TOTAL
	BSES		NDPL	NDMC	BSES		NDPL		
	BYPL	BRPL			BYPL	BRPL			
1	35	36	37	38	39	40	41	42= 26 to 41	43 = 25 + 42
01.Jun.18	0.000	0.000	0.000	0.000	0.000	0.000	0.000	0.127	0.127
02.Jun.18	0.000	0.000	0.000	0.000	0.000	0.000	0.000	0.042	0.042
03.Jun.18	0.000	0.000	0.000	0.000	0.000	0.000	0.000	0.031	0.031
04.Jun.18	0.000	0.000	0.000	0.000	0.000	0.000	0.000	0.050	0.050
05.Jun.18	0.000	0.000	0.000	0.000	0.000	0.000	0.000	0.039	0.039
06.Jun.18	0.000	0.000	0.000	0.000	0.000	0.000	0.000	0.115	0.115
07.Jun.18	0.000	0.000	0.000	0.000	0.000	0.000	0.000	0.036	0.036
08.Jun.18	0.000	0.000	0.000	0.000	0.000	0.000	0.000	0.231	0.231
09.Jun.18	0.000	0.000	0.000	0.000	0.000	0.000	0.000	0.385	0.385
10.Jun.18	0.000	0.000	0.000	0.000	0.000	0.000	0.000	0.082	0.082
11.Jun.18	0.000	0.000	0.000	0.000	0.000	0.000	0.000	0.137	0.137
12.Jun.18	0.000	0.000	0.000	0.000	0.000	0.000	0.000	0.116	0.116
13.Jun.18	0.000	0.000	0.000	0.000	0.000	0.000	0.000	0.080	0.080
14.Jun.18	0.000	0.000	0.000	0.000	0.000	0.000	0.000	0.115	0.115
15.Jun.18	0.000	0.000	0.000	0.000	0.000	0.000	0.000	0.079	0.079
16.Jun.18	0.000	0.000	0.000	0.000	0.000	0.000	0.000	0.094	0.094
17.Jun.18	0.000	0.000	0.000	0.000	0.000	0.000	0.000	0.014	0.014
18.Jun.18	0.000	0.000	0.000	0.000	0.000	0.000	0.000	0.078	0.078
19.Jun.18	0.000	0.000	0.000	0.000	0.000	0.000	0.000	0.015	0.023
20.Jun.18	0.000	0.000	0.000	0.000	0.000	0.000	0.000	0.002	0.002
21.Jun.18	0.000	0.012	0.018	0.000	0.000	0.000	0.000	0.163	0.163
22.Jun.18	0.000	0.000	0.000	0.000	0.000	0.000	0.000	0.060	0.060
23.Jun.18	0.000	0.000	0.000	0.000	0.000	0.000	0.000	0.066	0.066
24.Jun.18	0.000	0.000	0.000	0.000	0.000	0.000	0.000	0.045	0.045
25.Jun.18	0.000	0.000	0.000	0.000	0.000	0.000	0.000	0.057	0.057
26.Jun.18	0.000	0.000	0.000	0.000	0.000	0.000	0.000	0.021	0.021
27.Jun.18	0.000	0.000	0.000	0.000	0.000	0.000	0.000	0.121	0.121
28.Jun.18	0.000	0.000	0.000	0.000	0.000	0.000	0.000	0.186	0.186
29.Jun.18	0.000	0.000	0.000	0.000	0.000	0.000	0.000	0.072	0.072
30.Jun.18	0.000	0.000	0.007	0.000	0.000	0.000	0.000	0.028	0.028
TOTAL	0.000	0.012	0.025	0.000	0.000	0.000	0.000	2.687	2.695

DATE	(NET CONS.)	MAXI. DEMAND MET DURING THE DAY	TIME OF OCCURRENCE OF MAX DEMAND	SHEDDING AT THIS TIME	UN-RESTRICTED DEMAND	MAXIMUM UN-RESTRICTED DEMAND DURING THE DAY	TIME OF MAX. UN-REST. DEMAND	DEMAND AT THAT TIME	SHEDDING AT THAT TIME
	In Mus.	IN MW	IN HRS.	IN MW	IN MW	IN MW	HRS.	IN MW	IN MW
1	32	33	34	35	36=33+35	37=39+40	38	39	40
01.Jun.18	132.169	6651	15:36:37	0	6651	6651	15:36:37	6651	0
02.Jun.18	115.818	5636	15:25:17	0	5636	5636	15:25:17	5636	0
03.Jun.18	112.746	5955	23:36:39	0	5955	5955	23:36:39	5955	0
04.Jun.18	129.823	6438	15:36:20	11	6449	6449	15:36:20	6438	11
05.Jun.18	135.028	6562	15:45:52	3	6565	6565	15:45:52	6562	3
06.Jun.18	130.944	6377	00:01:22	7	6384	6384	00:01:22	6377	7
07.Jun.18	132.131	6568	15:20:39	0	6568	6568	15:20:39	6568	0
08.Jun.18	136.734	6934	15:28:33	3	6937	6937	15:28:33	6934	3
09.Jun.18	125.710	6419	15:21:51	0	6419	6419	15:21:51	6419	0
10.Jun.18	116.720	5952	23:42:32	4	5956	5956	23:42:32	5952	4
11.Jun.18	127.459	6412	15:14:47	0	6412	6412	15:14:47	6412	0
12.Jun.18	133.518	6689	15:35:18	0	6689	6689	15:35:18	6689	0
13.Jun.18	139.383	6670	15:26:20	0	6670	6670	15:26:20	6670	0
14.Jun.18	137.191	6621	15:31:20	0	6621	6621	15:31:20	6621	0
15.Jun.18	134.236	6448	00:02:38	4	6452	6452	00:02:38	6448	4
16.Jun.18	127.471	6254	00:00:00	0	6254	6254	00:00:00	6254	0
17.Jun.18	115.248	6006	00:00:08	0	6006	6006	00:00:08	6006	0
18.Jun.18	118.736	5821	15:36:46	0	5821	5821	15:36:46	5821	0
19.Jun.18	118.790	6027	23:35:56	0	6027	6027	23:35:56	6027	0
20.Jun.18	128.335	6256	15:33:31	0	6256	6256	15:33:31	6256	0
21.Jun.18	132.224	6389	15:36:29	14	6403	6403	15:36:29	6389	14
22.Jun.18	136.520	6699	15:15:09	0	6699	6699	15:15:09	6699	0
23.Jun.18	135.939	6472	00:00:19	0	6472	6472	00:00:19	6472	0
24.Jun.18	126.848	6353	23:40:52	0	6353	6353	23:40:52	6353	0
25.Jun.18	138.781	6848	15:27:36	0	6848	6848	15:27:36	6848	0
26.Jun.18	130.817	6512	00:00:00	6	6518	6518	00:00:00	6512	6
27.Jun.18	122.990	6118	14:57:21	0	6118	6118	14:57:21	6118	0
28.Jun.18	116.844	5671	15:33:40	0	5671	5671	15:33:40	5671	0
29.Jun.18	116.591	5498	15:06:43	0	5498	5498	15:06:43	5498	0
30.Jun.18	115.169	5649	23:00:44	0	5649	5649	23:00:44	5649	0
TOTAL	3820.913	6934 08.06.18	15:28:33	3	6937 08.06.18	6937	15:28:33	6934	3

10 **LOAD PATTERN OF DELHI ON THE DAY OF PEAK DEMAND MET DURING JUN 2018 ON 08.06.2018- 6934MW AT 15.28.33HRS.**

All figures in MW

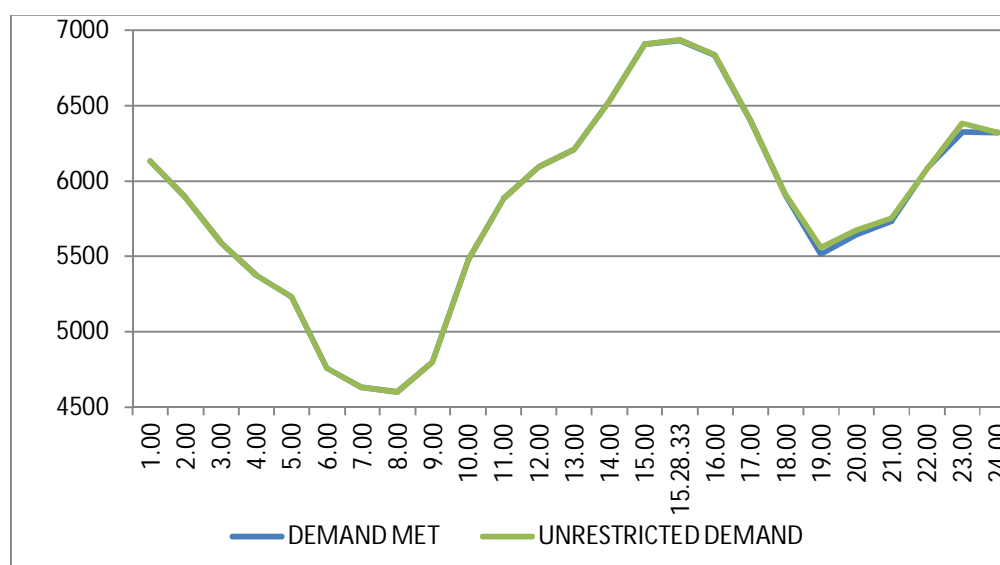
Hrs.	Demand	Load Shedding	Un-Restricted Demand
1.00	6133	0	6133
2.00	5887	0	5887
3.00	5592	0	5592
4.00	5374	0	5374
5.00	5228	0	5228
6.00	4757	0	4757
7.00	4627	0	4627
8.00	4600	0	4600
9.00	4799	0	4799
10.00	5479	0	5479
11.00	5877	0	5877
12.00	6094	0	6094
13.00	6210	0	6210
14.00	6522	0	6522
15.00	6909	0	6909
15.28.33	6934	3	6937
16.00	6834	3	6837
17.00	6398	0	6398
18.00	5902	0	5902
19.00	5514	47	5561
20.00	5642	31	5673
21.00	5733	23	5756
22.00	6080	3	6083
23.00	6326	58	6384
24.00	6321	0	6321
Total (IN MUS)	136.734	0.231	136.965



11 LOAD PATTERN OF DELHI ON THE DAY OF MAXIMUM UN-RESTRICTED DEMAND DURING JUN 2018 ON 08.06.2018-6937MW AT 15.28.33HRS.

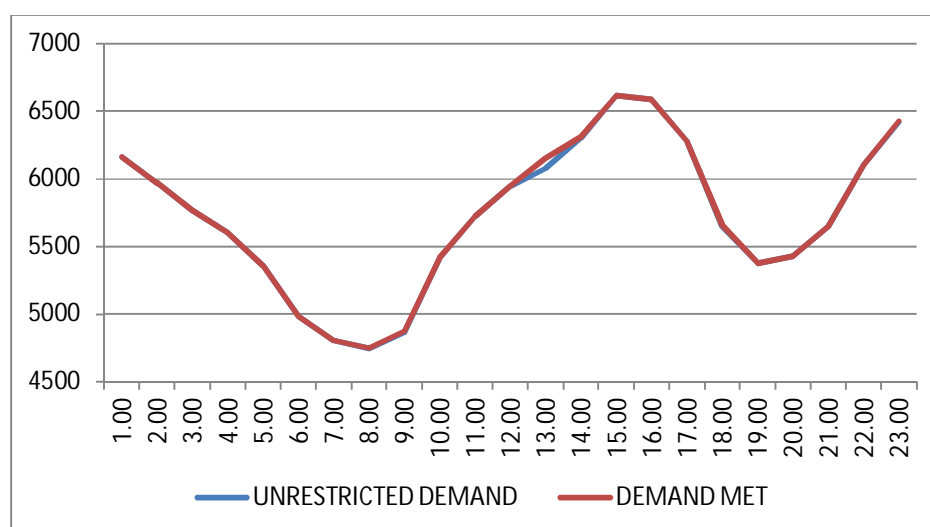
All figures in MW

Hrs.	Demand	Load Shedding	Un-Restricted Demand
1.00	6133	0	6133
2.00	5887	0	5887
3.00	5592	0	5592
4.00	5374	0	5374
5.00	5228	0	5228
6.00	4757	0	4757
7.00	4627	0	4627
8.00	4600	0	4600
9.00	4799	0	4799
10.00	5479	0	5479
11.00	5877	0	5877
12.00	6094	0	6094
13.00	6210	0	6210
14.00	6522	0	6522
15.00	6909	0	6909
15.28.33	6934	3	6937
16.00	6834	3	6837
17.00	6398	0	6398
18.00	5902	0	5902
19.00	5514	47	5561
20.00	5642	31	5673
21.00	5733	23	5756
22.00	6080	3	6083
23.00	6326	58	6384
24.00	6321	0	6321
Total (IN MUS)	136.734	0.231	136.965



**12 LOAD PATTERN OF DELHI ON THE DAY OF MAXIMUM ENERGY CONSUMED
DURING JUN 2018 – 13.06.2018 – 139.383Mus All figures in MW**

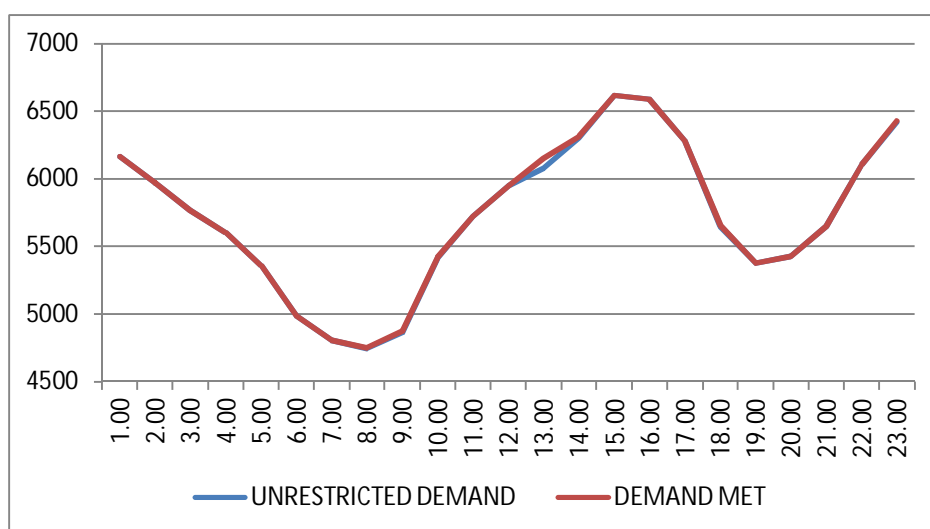
Hrs.	Demand	Load Shedding	Un-Restricted Demand
1.00	6160	0	6160
2.00	5969	0	5969
3.00	5766	0	5766
4.00	5603	0	5603
5.00	5356	0	5356
6.00	4983	0	4983
7.00	4803	0	4803
8.00	4743	6	4749
9.00	4866	6	4872
10.00	5414	6	5420
11.00	5721	0	5721
12.00	5948	0	5948
13.00	6076	74	6150
14.00	6305	9	6314
15.00	6614	1	6615
16.00	6588	0	6588
17.00	6281	0	6281
18.00	5650	7	5657
19.00	5375	0	5375
20.00	5426	0	5426
21.00	5646	0	5646
22.00	6106	0	6106
23.00	6418	8	6426
24.00	6365	12	6377
Total (IN MUS)	137.191	0.115	137.306



13 LOAD PATTERN OF DELHI ON THE DAY OF MAXIMUM UNRESTRICTED ENERGY DEMAND DURING JUN 2018 – 13.06.2018 – 139.643 Mus

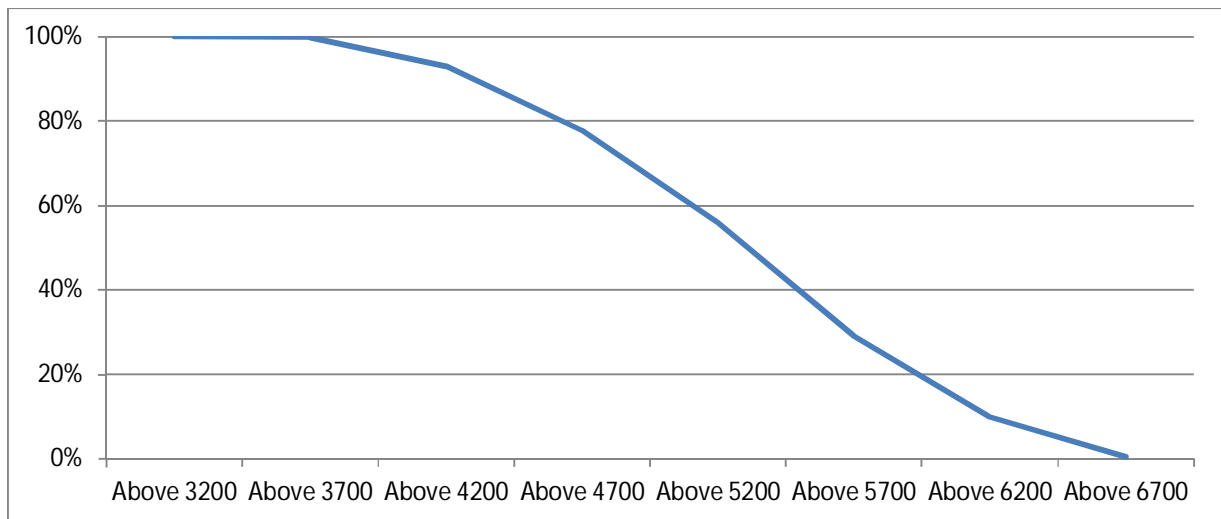
All figures in MW

Hrs.	Demand	Load Shedding	Un-Restricted Demand
1.00	6160	0	6160
2.00	5969	0	5969
3.00	5766	0	5766
4.00	5603	0	5603
5.00	5356	0	5356
6.00	4983	0	4983
7.00	4803	0	4803
8.00	4743	6	4749
9.00	4866	6	4872
10.00	5414	6	5420
11.00	5721	0	5721
12.00	5948	0	5948
13.00	6076	74	6150
14.00	6305	9	6314
15.00	6614	1	6615
16.00	6588	0	6588
17.00	6281	0	6281
18.00	5650	7	5657
19.00	5375	0	5375
20.00	5426	0	5426
21.00	5646	0	5646
22.00	6106	0	6106
23.00	6418	8	6426
24.00	6365	12	6377
Total (IN MUS)	137.191	0.115	137.306



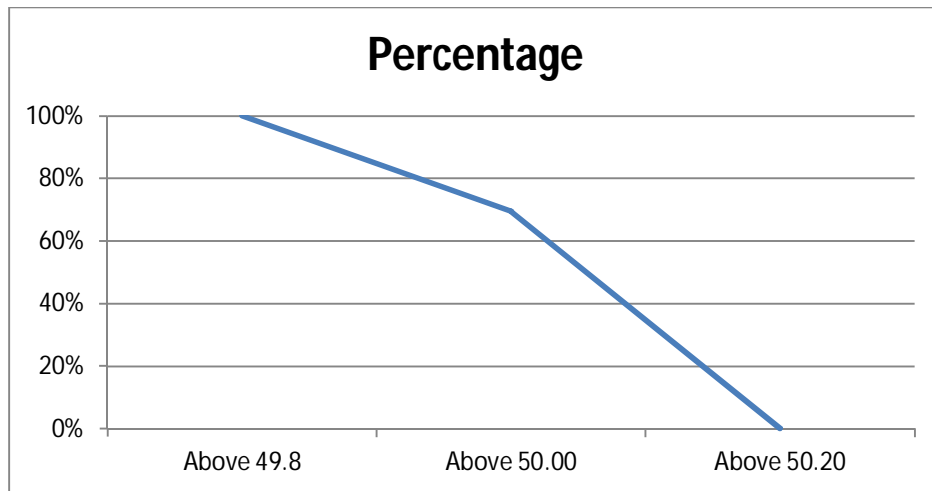
14 LOAD DURATION CURVE FOR JUNE 2018

Load in MW	Percentage of Time
Above 3200	100%
Above 3700	99.86%
Above 4200	92.99%
Above 4700	77.85%
Above 5200	55.90%
Above 5700	29.03%
Above 6200	9.93%
Above 6700	0.38%



FREQUENCY ANALYSIS FOR THE MONTH OF JUNE 2018

Frequency Range in Hz.	Percentage of time
Above 49.8	99.83
Above 50.0	75.14
Above 50.2	00.17



16 VOLTAGE PROFILE OF 220 KV SUB-STATIONS IN DELHI DURING JUNE 2018

All figures in kV

Date	NARELA		GAZIPUR	
	Max	Min	Max	Min
01.Jun.18	234.59	218.98	232.78	208.15
02.Jun.18	232.78	219.89	232.53	208.54
03.Jun.18	229.95	217.31	231.11	208.28
04.Jun.18	228.53	216.02	229.43	208.15
05.Jun.18	227.5	216.02	218.6	208.15
06.Jun.18	231.24	218.6	229.82	208.15
07.Jun.18	228.79	217.82	218.6	208.15
08.Jun.18	227.5	218.21	224.66	208.15
09.Jun.18	233.43	220.92	233.82	218.86
10.Jun.18	231.88	221.69	233.69	221.05
11.Jun.18	225.43	218.34	226.08	215.37
12.Jun.18	224.79	216.02	228.53	212.67
13.Jun.18	228.27	217.57	225.95	214.08
14.Jun.18	228.92	218.34	227.24	213.44
15.Jun.18	228.27	219.11	227.88	216.02
16.Jun.18	229.95	217.95	229.17	217.95
17.Jun.18	232.66	219.76	230.85	218.6
18.Jun.18	228.92	218.47	227.37	217.05
19.Jun.18	227.5	217.31	228.01	215.63
20.Jun.18	225.69	217.82	226.21	214.6
21.Jun.18	228.27	218.47	226.08	213.95
22.Jun.18	226.72	218.34	225.69	215.76
23.Jun.18	225.95	217.31	224.66	215.24
24.Jun.18	227.37	216.92	228.66	215.76
25.Jun.18	224.27	215.24	226.08	216.66
26.Jun.18	225.56	215.37	226.59	215.76
27.Jun.18	230.21	217.05	228.79	214.99
28.Jun.18	233.04	219.24	230.85	218.47
29.Jun.18	230.85	217.95	231.24	216.28
30.Jun.18	228.79	215.37	228.27	215.37

17 VOLTAGE PROFILE OF 400 KV SUB-STATIONS IN DELHI DURING JUNE 2018

All figures in kV

Date	400kV Bamnauli Grid Sub-Station				
	Max KV	Max Time	Min KV	Min Time	Average KV
01.Jun.18	418.56	21:04:53	392.76	15:15:02	402.32
02.Jun.18	415.04	04:24:54	389.01	15:16:25	400.98
03.Jun.18	409.88	05:03:28	389.25	22:49:30	400.45
04.Jun.18	408.71	07:02:32	385.73	22:58:24	395.26
05.Jun.18	405.19	06:01:35	385.73	12:26:56	394.98
06.Jun.18	413.63	07:26:00	390.42	22:53:02	400.36
07.Jun.18	407.3	07:33:33	388.54	14:21:14	397.43
08.Jun.18	406.13	07:57:47	389.01	15:24:09	397.37
09.Jun.18	415.98	17:30:24	392.76	15:24:32	401.81
10.Jun.18	416.92	08:05:05	393.7	22:17:27	405.41
11.Jun.18	411.06	07:51:09	389.01	14:37:56	399.45
12.Jun.18	409.88	05:38:33	385.03	15:14:34	397.89
13.Jun.18	408.94	06:02:57	389.25	22:17:19	398.88
14.Jun.18	410.82	08:02:30	389.95	22:59:13	398.81
15.Jun.18	412.23	08:02:44	391.12	15:44:55	399.08
16.Jun.18	411.99	08:02:08	389.72	00:05:17	400.07
17.Jun.18	414.81	08:04:12	391.36	22:20:24	403.8
18.Jun.18	408.71	06:50:26	389.95	00:08:45	398.87
19.Jun.18	409.18	06:38:39	388.54	11:41:20	398.89
20.Jun.18	405.66	06:01:03	389.25	11:11:54	396.76
21.Jun.18	405.66	06:01:47	389.72	11:08:58	396.66
22.Jun.18	406.6	07:02:41	389.95	23:13:04	397.07
23.Jun.18	405.19	18:20:25	388.78	00:07:54	396.31
24.Jun.18	411.52	18:02:41	387.84	00:26:58	399.36
25.Jun.18	406.13	06:04:13	387.37	11:52:43	394.19
26.Jun.18	405.66	18:32:09	388.08	14:42:38	394.27
27.Jun.18	412.46	06:03:30	387.84	14:36:22	400.75
28.Jun.18	418.32	02:51:44	394.64	12:34:55	404.68
29.Jun.18	415.04	06:02:25	390.89	14:25:49	402.08
30.Jun.18	411.99	07:03:12	389.95	14:43:03	399.27

All figures in kV

Date	400kV Bawana Grid Sub-Station				
	Max KV	Max Time	Min KV	Min Time	Average KV
01.Jun.18	420.43	21:07:21	395.58	00:14:42	404.28
02.Jun.18	418.09	04:01:29	396.99	19:43:10	406.5
03.Jun.18	411.99	06:37:43	394.64	22:50:38	403.91
04.Jun.18	410.35	07:02:46	391.12	22:58:14	399.23
05.Jun.18	406.6	06:01:13	392.06	12:21:46	398.25
06.Jun.18	414.34	06:02:51	396.05	22:52:10	403.99
07.Jun.18	407.54	07:00:20	393.47	14:45:53	400.16
08.Jun.18	408.01	08:04:17	394.64	00:33:53	401.14
09.Jun.18	418.56	17:32:09	399.8	15:27:59	406.44
10.Jun.18	418.32	08:07:12	397.45	22:23:23	408.47
11.Jun.18	411.52	07:49:52	394.41	22:35:26	402.16
12.Jun.18	410.82	07:03:01	0	09:55:43	280.47
13.Jun.18	411.99	06:01:54	394.41	22:18:56	402.01
14.Jun.18	411.06	08:02:18	396.05	22:59:30	401.53
15.Jun.18	412.46	08:03:36	396.28	15:44:47	402.01
16.Jun.18	412.23	08:05:31	393.23	00:05:22	403.3
17.Jun.18	418.32	08:05:20	397.22	00:06:38	407.67
18.Jun.18	411.06	06:49:20	395.58	00:08:27	402.12
19.Jun.18	409.88	06:01:49	393.7	11:43:23	401.67
20.Jun.18	406.37	06:02:15	394.41	11:49:06	399.58
21.Jun.18	410.12	06:02:28	395.81	00:35:36	401.78
22.Jun.18	408.71	07:02:49	394.88	23:11:52	400.7
23.Jun.18	406.37	06:05:23	393.23	00:11:47	399.46
24.Jun.18	411.06	18:05:19	392.76	00:27:51	401.65
25.Jun.18	408.01	06:03:37	391.59	11:47:17	398.13
26.Jun.18	407.3	18:29:45	393.47	14:44:02	398.44
27.Jun.18	413.87	07:31:54	392.76	14:31:30	403.74
28.Jun.18	419.5	04:32:27	398.39	12:29:08	407.05
29.Jun.18	415.98	06:04:41	394.41	14:28:21	404.49
30.Jun.18	411.52	07:08:28	393.47	23:18:55	401.33

18 DETAILS OF LUMPED CAPACITORS AT NEAREST 220 KV SUBSTATION

S. No.	SUB-STATION	Name of Utility	INSTALLED CAPACITY			
			66KV	33kV	11kV	TOTAL
1	IP YARD	DTL		30.00		30.00
1	Kamla Market	BYPL			16.35	16.35
2	Minto Road	BYPL				0.00
3	GB Pant Hosp	BYPL			10.48	10.48
4	Delhi Gate	BYPL			16.30	16.30
5	Tilakmarg	NDMC			5.04	5.04
7	Cannaught Place	NDMC			10.08	10.08
8	Kilokri	BRPL		0.00	10.48	10.48
9	NDSE-II	BRPL				0.00
11	Nizamuddin	BRPL				0.00
12	Exhibition-I	BRPL				0.00
13	Exhibition-II	BRPL				0.00
14	Defence Colony	BRPL				0.00
15	IG Stadium	BYPL		10.08	5.45	15.53
16	Lajpat Nagar	BRPL				0.00
17	IP Estate	BYPL			10.90	10.90
18	D.D.U.Marg	BYPL			10.80	10.80
			0.00	40.08	95.88	135.96
2	Electric Lane					
1	Electric Lane	NDMC			5.04	5.04
2	Scindia House	NDMC			10.44	10.44
3	Mandi House	NDMC			10.80	10.80
4	Raisina Road	NDMC			10.08	10.08
5	Raja Bazar	NDMC			10.08	10.08
			0.00	0.00	46.44	46.44
3	RPH Station	IPGCL		20.00		20.00
1	Lahori Gate	BYPL			10.49	10.49
2	Jama Masjid	BYPL			10.48	10.48
4	Kamla Market	BYPL				0.00
5	Minto Road	BYPL			10.90	10.90
6	GB Pant Hosp	BYPL				0.00
7	IG Stadium	BYPL				0.00
			0.00	20.00	31.87	51.87
4	Parkstreet S/stn	DTL	20.00	20.00		40.00
1	Shastri Park	BYPL		0.00	5.45	5.45
2	Faiz Road	BYPL			18.05	18.05
3	Motia Khan	BYPL			16.30	16.30
4	Prasad Nagar	BYPL			16.25	16.25

S. No.	SUB-STATION	Name of Utility	INSTALLED CAPACITY			
			66KV	33kV	11kV	TOTAL
5	Anand Parbat	BYPL			10.80	10.80
6	Shankar Road	BYPL			10.44	10.44
7	Rama Road	TPDDL			0.00	0.00
8	Baird Road	NDMC			10.08	10.08
9	Hanuman Road	NDMC			10.08	10.08
10	Pusa	TPDDL			5.44	5.44
11	Ridge Valley	BRPL			0.00	0.00
12	B. D. Marg	NDMC			5.40	5.40
13	Nirman Bhawan	NDMC			5.04	5.04
			20.00	20.00	113.33	153.33
5	Naraina S/stn	DTL		20.00	5.04	25.04
1	DMS	BYPL			10.85	10.85
2	Mayapuri	BRPL		10.87	10.40	21.27
3	Inderpuri	TPDDL		13.26	5.04	18.30
4	Rewari line	TPDDL				0.00
5	Khyber Lane	MES		10.05		10.05
6	Kirbi Place	MES		10.05		10.05
7	Payal	TPDDL			10.08	10.08
8	A-21 Naraina	TPDDL			4.80	4.80
8	Saraswati Garden	TPDDL			10.08	10.08
			0.00	64.23	56.29	120.52
6	Mehrauli S/stn	DTL	80.00		5.04	85.04
1	Adchini	BRPL			14.61	14.61
2	Andheria Bagh	BRPL			10.85	10.85
3	IIT	BRPL			10.90	10.90
4	JNU	BRPL			10.03	10.03
5	Bijwasan	BRPL			15.47	15.47
6	DC Saket	BRPL		10.08	9.98	20.06
7	Malviya Nagar	BRPL				0.00
8	C Dot	BRPL			23.08	23.08
9	Vasant kunj B-Blk	BRPL	21.79		10.90	32.69
10	Vasant kunj C-Blk	BRPL	20.16		10.48	30.64
11	Palam	BRPL				0.00
12	IGNOU	BRPL			14.54	14.54
13	R. K. Puram-I	BRPL			10.07	10.07
14	Vasant Vihar	BRPL			19.25	19.25
15	Pusp Vihar	BRPL			10.44	10.44
16	Bhikaji Cama Place	BRPL		10.08	10.07	20.15
17	Fatehpuri	BRPL			14.40	14.40
			121.95	20.16	200.11	342.22

S. No.	SUB-STATION	Name of Utility	INSTALLED CAPACITY			
			66KV	33kV	11kV	TOTAL
7	Vasantkunj S/stn	DTL	40.00		5.04	45.04
1	R. K. Puram-II	BRPL			10.80	10.80
2	Vasant kunj C-Blk	BRPL				0.00
3	Vasant kunj D-Blk	BRPL			9.63	9.63
4	Ridge Valley	BRPL				0.00
			40.00	0.00	25.47	65.47
8	Okhla S/stn	DTL	60.00	10.00	5.04	75.04
1	Balaji	BRPL			10.80	10.80
2	East of Kailash	BRPL			15.89	15.89
3	Alaknanda	BRPL			16.30	16.30
4	Malviya Nagar	BRPL	21.79	20.16	10.85	52.80
5	Masjid Moth	BRPL			16.30	16.30
6	Nehru Place	BRPL			21.34	21.34
7	Okhla Ph-I	BRPL	21.79		16.30	38.09
8	Okhla Ph-II	BRPL		20.93	15.47	36.40
9	Shivalik	BRPL			10.80	10.80
10	Batra	BRPL			15.90	15.90
11	VSNL	BRPL			10.90	10.90
12	Siri Fort	BRPL			10.49	10.49
13	Tuglakabad	BRPL			18.05	18.05
			103.58	51.09	194.43	349.10
9	Lodhi Road S/stn	DTL			20.00	20.00
1	Defence Colony	BRPL			14.85	14.85
2	Hudco	BRPL			10.90	10.90
3	Lajpat Nagar	BRPL			10.90	10.90
4	Nizamuddin	BRPL			10.44	10.44
5	Vidyut Bhawan (Shahjahan Rd)	NDMC			10.80	10.80
6	Ex. Gr. II	BRPL			0.00	0.00
7	IHC	BRPL			0.00	0.00
			0.00	0.00	77.89	77.89
10	Sarita Vihar S/stn	DTL	20.00		5.04	25.04
1	Sarita Vihar	BRPL			10.07	10.07
2	MCIE	BRPL			17.26	17.26
3	Mathura Road	BRPL			11.69	11.69
4	Jamia Millia	BRPL			10.89	10.89
5	Sarai Julena	BRPL			16.29	16.29
6	Jasola	BRPL			5.44	5.44
7	Meethapur	BRPL			14.40	14.40
			20.00	0.00	91.08	111.08

S. No.	SUB-STATION	Name of Utility	INSTALLED CAPACITY			
			66KV	33kV	11kV	TOTAL
11	Wazirabad					
1	Bhagirathi	BYPL		14.40	18.10	32.50
2	Ghonda	BYPL	0.00	22.56	15.94	38.50
3	Seelam Pur	BYPL		10.08	21.39	31.47
4	Dwarkapuri	BYPL			22.66	22.66
5	Nandnagri	BYPL	20.01		16.35	36.36
6	Yamuna Vihar	BYPL			14.40	14.40
7	East of Loni Road	BYPL			18.00	18.00
8	Shastri Park	BYPL			10.90	10.90
9	Karawal Nagar	BYPL			5.40	5.40
10	Sonia Vihar	BYPL			14.70	14.70
			20.01	47.04	157.84	224.89
12	Geeta Colony					
1	Geeta Colony	BYPL			10.49	10.49
2	Kanti Nagar	BYPL			18.10	18.10
3	Kailash Nagar	BYPL			15.48	15.48
4	Seelam Pur	BYPL				0.00
5	Shakar Pur	BYPL			10.80	10.80
6	Krishna Nagar	BYPL			14.40	14.40
			0.00	0.00	69.27	69.27
13	Gazipur S/stn	DTL	40.00		5.04	45.04
1	Dallupura	BYPL	0.00		18.10	18.10
2	Vivek Vihar	BYPL			9.57	9.57
3	GT Road	BYPL			10.85	10.85
4	Kondli	BYPL	20.00		5.04	25.04
5	MVR-I	BYPL			10.90	10.90
6	MVR-II	BYPL	20.00		10.44	30.44
7	PPG Ind. Area	BYPL			10.06	10.06
8	New Kondli	BYPL			10.80	10.80
			80.00	0.00	90.80	170.80
14	Patparganj S/stn	DTL	40.00	20.00	5.04	65.04
1	GH-I	BYPL	19.89		15.85	35.74
2	GH-II	BYPL	20.09		18.10	38.19
3	CBD	BYPL		10.03	15.48	25.51
4	Guru Angad Nagar	BYPL			15.49	15.49
5	Karkadooma	BYPL		10.80	10.44	21.24
6	Preet Vihar	BYPL			10.08	10.08
7	CBD-II	BYPL			10.80	10.80
8	Shakarpur	BYPL				0.00

S. No.	SUB-STATION	Name of Utility	INSTALLED CAPACITY			
			66KV	33kV	11kV	TOTAL
9	Jhilmil	BYPL			10.80	10.80
10	Dilshad Garden	BYPL	20.16		15.48	35.64
11	Khichripur	BYPL	21.79		15.89	37.68
12	Mother Dairy	BYPL				0.00
13	Scope Building	BYPL				0.00
14	Vivek Vihar	BYPL			7.20	7.20
15	Akhardham	BYPL			14.60	14.60
			121.93	40.83	165.25	328.01
15	Najafgarh S/stn	DTL	60.00		5.04	65.04
1	A4 Paschim Vihar	BRPL			10.80	10.80
2	Nangloi	BRPL	21.73		15.84	37.57
3	Nangloi W/W	BRPL	20.89		10.85	31.74
4	Pankha Road	BRPL			15.88	15.88
5	Jaffarpur	BRPL			26.23	26.23
7	Inst. Area Janakpuri (Sagarpur)	BRPL			17.60	17.60
8	Paschimpuri	BRPL		10.05	15.47	25.52
9	Paschim Vihar	BRPL	41.83		15.43	57.26
10	Mukherjee Park	BRPL			20.83	20.83
11	Udyog Nagar	BRPL			10.43	10.43
12	Choukhandi	BRPL			10.07	10.07
13	DJB Najafgarh	BRPL			21.60	21.60
			144.45	10.05	196.07	350.57
16	Pappankalan-I S/stn	DTL	20.00		5.04	25.04
1	Bindapur Grid G-3 PPK	BRPL	21.73		15.85	37.58
2	Bodella-I	BRPL	20.10		21.70	41.80
3	Bodella-II	BRPL	21.73		17.64	39.37
4	DC Janakpuri	BRPL			10.03	10.03
5	G-2 PPK (Nasirpur)	BRPL			16.20	16.20
6	G-5 PPK (Matiala)	BRPL			22.71	22.71
7	G-6 PPK	BRPL			12.60	12.60
8	G-7 PPK	BRPL			21.60	21.60
9	G-15 PPK	BRPL			10.80	10.80
10	Harinagar	BRPL			16.25	16.25
11	Rewari line	TPDDL			5.44	5.44
			83.56	0.00	175.86	259.42

S. No.	SUB-STATION	Name of Utility	INSTALLED CAPACITY			
			66KV	33kV	11kV	TOTAL
17	BBMB Rohtak Road					
1	S.B. Mill	BRPL			10.07	10.07
2	Rama Road	TPDDL			10.88	10.88
3	Ram Pura	TPDDL			10.48	10.48
4	Rohtak Road	TPDDL			10.08	10.08
5	Vishal	BRPL			10.40	10.40
6	Madipur	BRPL			10.43	10.43
7	Sudershan Park	TPDDL			10.08	10.08
8	Kirti Nagar	TPDDL			7.20	7.20
			0.00	0.00	79.62	79.62
18	Shalimarbagh S/stn	DTL		40.00	6.00	46.00
1	S.G.T. Nagar	TPDDL			7.20	7.20
2	Ashok Vihar	TPDDL			0.00	0.00
3	Haiderpur	TPDDL			11.39	11.39
4	SMB FC	TPDDL			12.64	12.64
5	Rani Bagh	TPDDL			14.40	14.40
6	SMB KHOSLA	TPDDL			7.20	7.20
			0.00	40.00	58.83	98.83
19	Subzimandi S/stn	DTL			6.00	6.00
1	Shakti Nagar	TPDDL			5.04	5.04
2	Gulabibagh	TPDDL			10.88	10.88
3	Shahzadabagh	TPDDL			15.79	15.79
4	DU	TPDDL			7.20	7.20
5	Tripolia	TPDDL			10.88	10.88
6	B. G. Road	BYPL			5.40	5.40
			0.00	0.00	61.19	61.19
20	Narela S/stn	DTL	40.00		5.04	45.04
1	A-7 Narela	TPDDL			10.88	10.88
2	Azad Pur	TPDDL			22.80	22.80
3	Badli	TPDDL	20.00		5.95	25.95
4	DSIDC Narela-1	TPDDL			5.95	5.95
5	GTK	TPDDL			8.44	8.44
6	Jahangirpuri	TPDDL	20.00	10.00	0.00	30.00
7	Bhalswa	TPDDL			12.64	12.64
8	Pitampura-I	TPDDL	20.00		12.24	32.24
9	RG-1	TPDDL			7.20	7.20
			100.00	10.00	91.14	201.14

S. No.	SUB-STATION	Name of Utility	INSTALLED CAPACITY			
			66KV	33kV	11kV	TOTAL
21	Gopalpur S/stn	DTL		30.00	5.04	35.04
1	Hudson Lane	TPDDL			5.95	5.95
2	Wazirabad	TPDDL			7.20	7.20
3	Indra Vihar	TPDDL			5.04	5.04
4	DIFR	TPDDL				0.00
5	GTK Road	TPDDL			8.44	8.44
6	Jahangirpuri	TPDDL	20.00	20.00	7.20	47.20
7	Civil lines	TPDDL			7.20	7.20
8	Pitam Pura-3	TPDDL			7.20	7.20
9	SGT Nagar	TPDDL			13.15	13.15
10	Tiggipur	TPDDL			10.88	10.88
11	Model Town	TPDDL			14.40	14.40
12	Azad Pur	TPDDL			22.80	22.80
13	Dheerpur	TPDDL			14.40	14.40
			20.00	50.00	128.90	198.90
22	Rohini S/stn	DTL	40.00		6.00	46.00
1	Rohini Sec-22	TPDDL			18.08	18.08
2	Rohini Sec-24	TPDDL			7.20	7.20
3	Rohini-3	TPDDL			5.95	5.95
4	Rohini-4	TPDDL			11.39	11.39
5	Rohini-5	TPDDL			11.39	11.39
6	Rohini-6	TPDDL			0.00	0.00
7	Mangolpuri-2	TPDDL	20.00		7.20	27.20
8	Pitam Pura-1	TPDDL			0.00	0.00
9	Pitam Pura-2	TPDDL			10.48	10.48
10	Rohini DC-1	TPDDL			14.40	14.40
11	AIR Kham pur	TPDDL			11.90	11.90
			60.00	0.00	103.99	163.99
23	Kanjhawala S/stn	DTL	20.00		5.04	25.04
1	Bawana Clear Water	TPDDL			14.30	14.30
2	Pooth Khoord	TPDDL	20.00		7.20	27.20
4	Rohini -2	TPDDL			13.15	13.15
			40.00	0.00	39.69	79.69
24	BAWANA S/stn					
1	Bawana S/stn No. 6	TPDDL			10.88	10.88
2	Bawana S/stn No. 7	TPDDL			7.20	7.20
			0.00	0.00	18.08	18.08

S.	SUB-STATION	Name of	INSTALLED CAPACITY			
			Utility	66KV	33kV	11kV
25	Kashmeregate S/stn	DTL			5.04	5.04
1	Civil lines	TPDDL			7.20	7.20
2	Town Hall	BYPL			8.64	8.64
3	Fountain	BYPL			5.45	5.45
			0.00	0.00	26.33	26.33
26	Pappankalan-II					
1	DMRC	BRPL				0.00
2	HASTAL	BRPL			21.60	21.60
3	GGSH	BRPL			10.80	10.80
4	66kV G-4	BRPL			21.60	21.60
			0.00	0.00	54.00	54.00
27	Trauma Center (AIIMS)					
1	AIIMS	NDMC		13.26	5.04	18.30
2	Trauma Center	NDMC			10.08	10.08
3	Netaji Nagar	NDMC			15.12	15.12
4	Sanjay Camp	NDMC			10.08	10.08
5	Kidwai Nagar	NDMC			10.08	10.08
6	SJ Airport	NDMC			5.04	5.04
7	Race Course	NDMC			10.44	10.44
			0.00	13.26	65.88	79.14
28	MUNDKA					
1	Mangolpuri-I	TPDDL			19.10	19.10
2	Rohini Sec-23	TPDDL	20.00		14.20	34.20
3	66kV Mundka	BRPL			21.60	21.60
			20.00	0.00	54.90	74.90
29	DSIDC BAWANA					
1	DSIDC NRL-1	TPDDL	0.00			0.00
2	DSIDC NRL-2	TPDDL			21.60	21.60
3	Bawana Clear Water	TPDDL			21.60	21.60
4	Bawana-1	TPDDL			14.40	14.40
			0.00	0.00	57.60	57.60
30	RIDGE VALLEY					
1	Keventry Diary	NDMC			10.08	10.08
2	Nehru Park	NDMC			5.04	5.04
3	State Guest House	NDMC			5.40	5.40
4	Bapu Dham	NDMC			15.48	15.48
5	66kV Vasant Kunj Inst. Area	BRPL			21.60	21.60
			0.00	0.00	57.60	57.60

S. No.	SUB-STATION	Name of Utility	INSTALLED CAPACITY			
			66KV	33kV	11kV	TOTAL
31	IP EXTN (PRAGATI)					
1	Vidyut Bhawan	NDMC			10.08	10.08
2	Dalhousie Road	NDMC			5.04	5.04
3	National Archives	NDMC			10.08	10.08
4	School Lane	NDMC			10.44	10.44
			0.00	0.00	35.64	35.64
32	Wazirpur					
1	Tri Nagar	TPDDL			14.80	14.80
2	Wazirpur-1	TPDDL			18.80	18.80
3	Wazirpur-2	TPDDL			13.20	13.20
4	Ashok vihar	TPDDL			20.47	20.47
5	Azad Pur	TPDDL			22.80	22.80
6	GTK	TPDDL			8.44	8.44
			0.00	0.00	98.51	98.51
33	Peeragarhi					
1	Rani Bagh	TPDDL			0.00	0.00
2	Rani Bagh cc	TPDDL			9.60	9.60
			0.00	0.00	9.60	9.60
34	Rohini-II					
1	Rohini-6	TPDDL			13.15	13.15
2	Siraspur	TPDDL			14.80	14.80
			0.00	0.00	27.95	27.95

ALL FIGURES IN MVAR

Utility	HT	LT	Total
BYPL	903.49	102.00	1005.49
BRPL	1257.93	242.00	1499.93
TPDDL*	969.12	119.00	1088.12
NDMC	259.86	24.00	283.86
DTL	753.52	0.00	753.52
IPGCL (RPH)	20.00	0.00	20.00
MES	20.10	0.00	20.10
TOTAL	4184.02	487.00	4671.02

20 DETAILS OF BREAK-DOWNS DURING THE MONTH OF JUNE2018

SL NO	OCCURRENCE OF BREAK-DOWN		DETAILS OF THE BREAKDOWN	TIME OF RESTORATION		REMARKS
	DATE	TIME		DATE	TIME	
1	2.6.18	22:30	BAWANA 400/220kV 315MVA ICT-I	3.6.18	13:05	DUE TO SPARKING OBSERVED
2	3.6.18	06:50	SARITA VIHAR 220/66kV 100MVA Tx-II	3.6.18	11:54	FIRE REPORTED
3	9.6.18	16:55	400kV Ballabgarh-Bamnauli Ckt-I	9.6.18	19:56	AT BAMNAULI : DIS PROT, DIS 7.82KM, ZONE-I
4	9.6.18	17:05	400kV Bamnauli-Jhatikara Ckt-II	9.6.18	18:55	AT BAMNAULI : DIST PROT, ZONE-I, DIST 0.5KM.
5	9.6.18	17:05	400kV Bamnauli-Jhatikara Ckt-I	9.6.18	18:55	AT BAMNAULI : Distance Protn, A&B ph; zone-1&4 , 594 m.
6	9.6.18	17:07	BAMNAULI 400/220kV 315MVA ICT-I	9.6.18	18:20	96 BB, OLTC B ph;
7	9.6.18	17:20	220KV WAZIRABAD - MANDOLA CKT-IV	9.6.18	20:07	Dist. Prot. Z-1, DIST. 821.1m.
8	9.6.18	17:20	220KV WAZIRABAD - MANDOLA CKT-III	9.6.18	20:07	At WZB: DIST PROT, Z-1, DIST 799.6m, BC Ph.
9	9.6.18	17:25	220KV MAHARANI BAGH - SARITA VIHAR CKT	9.6.18	21:10	At MBG: RY ph; Z-3, 7.9km At SVR: Z-1, 1.8 km
10	9.6.18	17:27	220KV GAZIPUR - BTPS CKT	10.6.18	00:09	At BTPS: Z-1, R ph; 7.3 km, 12.88 kA At Gazipur: already off.
11	9.6.18	17:28	220KV WAZIRABAD-GEETA COLONY CKT-II	9.6.18	20:27	At GEETA COLONY : DIST PROT, 86, Y ph; 5.476 km, IB = 10.47 kA, DIST PROT, Zone-2&3 At WZB: RY ph; Z-1, ABN ph; DIST. 328.8m
12	9.6.18	17:28	220KV PRAGATI - SARITA VIHAR CKT - I	9.6.18	21:47	At SVR: Z-1, 1.026 km, Y ph. At PGT: Y ph; E/F, 13.17 km.
13	9.6.18	17:29	220KV GOPALPUR-SUBZI MANDI CKT-II	9.6.18	18:06	AT GOPALPUR : B Ph; Z-1, 13.8 km, N to Y ph. No tripping at Sabzimandi
14	9.6.18	17:35	220 KV GOPALPUR-WAZIRABAD CKT - 1	9.6.18	18:35	At Gopalpur: W/o indication CVT available
15	9.6.18	17:35	220 KV I.P.- RPH CKT-I	9.6.18	22:18	At IP: 86 ABC, DIST PROT, Z-2, DIST. 1.4 km At RPH: Z-2 DIST PROT, .
16	9.6.18	17:40	GAZIPUR 66/11kV, 20MVA Tx-II	9.6.18	18:27	86, PRV.
17	10.6.18	07:31	220KV GOPALPUR-SUBZI MANDI CKT-II	10.6.18	11:47	AT GOPALPUR : DIST PROT, DIST 6.5KM.
18	10.6.18	13:11	220KV DIAL- MEHRAULI CKT-II	10.6.18	13:50	AT DIAL : DIFFERENTIAL , R PHASE FAULTY, RYB PHASE TRIP.
19	11.6.18	09:53	220KV DIAL- MEHRAULI CKT-I	11.6.18	09:56	AT DIAL : DIFFERENTIAL, BY PHASE.
20	12.6.18	02:59	LODHI RD 33/11kV, 20MVA Tx-I	12.6.18	08:40	E/F.
21	12.6.18	03:05	LODHI RD 33/11kV, 20MVA Tx-II	12.6.18	05:26	TR. TRIPPED ON BUCHHOLZ, PRV RELAY, I/C TRIPPED ON E/F.
22	16.6.18	00:08	220KV MUNDKA-KANJHAWALA CKT	16.6.18	00:40	AT KHANJAWALA : TRIPPED WITHOUT INDICATION.
23	16.6.18	14:02	MASJID MOTH 220/33kV 100MVA Tx-II	16.6.18	14:45	86
24	16.6.18	14:02	MASJID MOTH 220/33kV 100MVA Tr-III	16.6.18	14:45	86
25	16.6.18	14:02	MASJID MOTH 220/33kV 100MVA Tx-I	16.6.18	15:10	86
26	16.6.18	19:06	220KV MUNDKA-KANJHAWALA CKT	16.6.18	19:50	AT KHANJAWALA : DIST PROT, ZONE-I, DIST 7.07KM. AT MUNDKA : DIST PROT, ZONE-II, DIST 20KVM.
27	17.6.18	09:29	WAZIRABAD 220/66kV 160MVA Tx-I	17.6.18	10:58	HV, LV, REF.
28	18.6.18	06:30	SARITA VIHAR 66kV MATHURA ROAD CKT-II	18.6.18	12:17	FIRE IN CONTROL PANEL.
29	21.6.18	18:24	220 KV TRAUMA CENTER-RIDGE VALLEY CKT-2	21.6.18	19:18	AT RIDGE VALLEY : DIFFERENTIAL TRIP, GENERAL TRIP.
30	22.6.18	05:35	INDRAPRASTHA POWER 220/33kV 100MVA Tx-I	22.6.18	06:09	86
31	22.6.18	13:37	220KV PRAGATI - SARITA VIHAR CKT - I	22.6.18	15:15	AT PRAGATI : DIST PROT, ZONE-I, II, III, DIST 6.93KM. AT SARITA VIHAR : DIST PROT, ZONE-I, DIST 6.642KM.

SL NO	OCCURRENCE OF BREAK-DOWN		DETAILS OF THE BREAKDOWN	TIME OF RESTORATION		REMARKS
	DATE	TIME		DATE	TIME	
32	23.6.18	17:10	220KV GAZIPUR- PATPARGANJ CKT	23.6.18	17:10	AT GAZIPUR : B PHASE, GEN TRIP, O/C. AT PATPARGANJ : SUPPLY FAILED.
33	25.6.18	09:02	OKHLA 220/33kV 100MVA Tx-V	25.6.18	09:28	E/F.
34	25.6.18	17:31	400KV Bamnauli-Jhatikara Ckt-II	25.6.18	22:58	AT BAMNAULI : JUMPER SNAPPED.
35	26.6.18	03:34	PARKSTREET 220/66kV 100MVA Tx-II	26.6.18	03:52	86, E/F.
36	26.6.18	14:23	220KV GAZIPUR - NOIDA SEC.-62 CKT	26.6.18	17:25	AT BTPS : DIST PROT, ZONE-I, DIST 14.6KM.
37	27.6.18	00:27	VASANT KUNJ 66/11kV, 20MVA Tx-I	27.6.18	00:50	86
38	27.6.18	07:56	BAWANA 400/220kV 315MVA ICT-I	27.6.18	14:49	B PHASE TRIP, 86, BUCHHOLZ.
39	27.6.18	16:25	INDRAPRASTHA POWER 220/33kV 100MVA Tx-I	27.6.18	16:30	O/C, 86
40	27.6.18	16:25	INDRAPRASTHA POWER 220/33kV 100MVA Tx-II	27.6.18	16:30	O/C, R PHASE.
41	27.6.18	16:25	INDRAPRASTHA POWER 33kV IG STADIUM CKT-II (BAY-33)	27.6.18	16:30	BIRDAGE.
42	28.6.18	01:30	GAZIPUR 220/66kV 100MVA Tx-II	28.6.18	08:23	DIFFERENTIAL PROT,RYB PHASE, 86.
43	28.6.18	02:40	TRAUMA CENTER 220/33kV 100MVA Tx-II	28.6.18	06:06	86A, 86B, SPR.
44	28.6.18	10:50	220KV GAZIPUR- PATPARGANJ CKT	28.6.18	11:37	AT GAZIPUR : Y PHSE, O/C.
45	28.6.18	10:52	BAWANA 220/66kV 100MVA Tx	28.6.18	11:31	86B.
46	28.6.18	11:46	TRAUMA CENTER 220/33kV 100MVA Tx-II	28.6.18	13:56	SPR, PRV, I/C TRIPPED ON 86A&B.
47	28.6.18	16:27	TRAUMA CENTER 220/33kV 100MVA Tx-II	28.6.18	18:25	SPR, I/C TRIPPED ON 86A&B.
48	29.6.18	09:48	INDRAPRASTHA POWER 220/33kV 100MVA Tx-II	29.6.18	10:58	R PHASE, O/C, E/F.
49	29.6.18	09:48	INDRAPRASTHA POWER 220/33kV 100MVA Tx-I	29.6.18	10:58	I/C TRIPPED ON R PHASE, O/C, E/F.
50	30.6.18	07:33	220 KV PATPARGANJ - I.P. CKT-II	30.6.18	16:07	At I.P. : Dist prot, Zone-II, ABC Phase, 186, 86 At Patparganj : Dist prot, zone-I, Dist 0.986km, RYB Phase.
51	30.6.18	07:33	220 KV PATPARGANJ - I.P. CKT-I	30.6.18	08:23	At I.P. : Dist prot, Zone-I, ABC Phase, 186, 86 At Patparganj : Ckt. did not trip.
52	30.6.18	08:04	RAJGHAT 220/33kV 100MVA Tx-I	30.6.18	08:28	86A, B & C, Auto reclose
53	30.6.18	08:32	RAJGHAT 220/33kV 100MVA Tx-I	30.6.18	10:14	Tripped without indication

20 DETAILS OF UNDER FREQUENCY RELAY OPERATIONS IN DELHI POWER SYSTEM DURING THE MONTH OF JUNE 2018

DATE	S. N.	TIME		Name of Grid	NAME OF AFFECTED FEEDERS	MODE	LOAD RELIEF IN MW
		OUT	IN				
				NIL			